



**ELECTRONIC COPY**



May 25, 2026

IGI Report Number **LG803605773**

Description **LABORATORY GROWN DIAMOND**

Shape and Cutting Style **EMERALD ROSE CUT**

Measurements **13.25 X 8.79 X 2.20 MM**

**GRADING RESULTS**

Carat Weight **3.24 CARATS**

Color Grade **FANCY PINK**

Clarity Grade **VVS 2**

**LABORATORY GROWN DIAMOND REPORT**

May 25, 2026

IGI Report Number **LG803605773**

Description **LABORATORY GROWN DIAMOND**

Shape and Cutting Style **EMERALD ROSE CUT**

Measurements **13.25 X 8.79 X 2.20 MM**

**GRADING RESULTS**

Carat Weight **3.24 CARATS**

Color Grade **FANCY PINK**

Clarity Grade **VVS 2**

**ADDITIONAL GRADING INFORMATION**

Polish **EXCELLENT**

Symmetry **EXCELLENT**

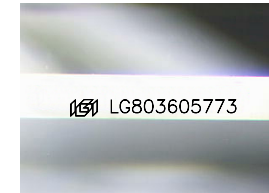
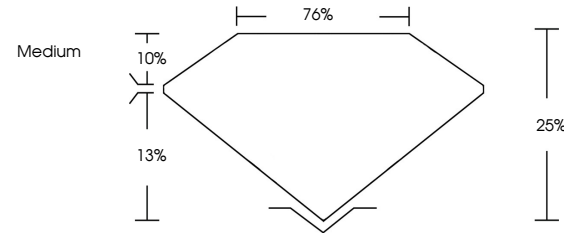
Fluorescence **SLIGHT**

Inscription(s) **LG803605773**

Comments: This Laboratory Grown Diamond was created by Chemical Vapor Deposition (CVD) growth process.

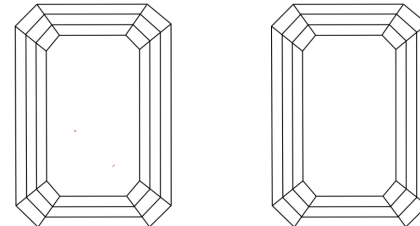
Indications of post-growth treatment.

**PROPORTIONS**



Sample Image Used

**CLARITY CHARACTERISTICS**



**KEY TO SYMBOLS**

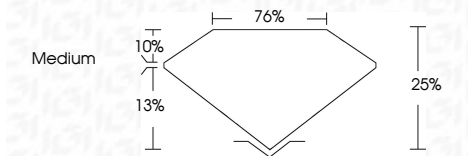
Red symbols indicate internal characteristics.  
Green symbols indicate external characteristics.

**COLOR**

|   |   |   |   |   |   |   |       |            |       |
|---|---|---|---|---|---|---|-------|------------|-------|
| D | E | F | G | H | I | J | Faint | Very Light | Light |
|---|---|---|---|---|---|---|-------|------------|-------|

**CLARITY**

| FL       | IF                  | VVS <sup>1-2</sup>          | VS <sup>1-2</sup>      | SI <sup>1-2</sup> | I <sup>1-3</sup> |
|----------|---------------------|-----------------------------|------------------------|-------------------|------------------|
| Flawless | Internally Flawless | Very Very Slightly Included | Very Slightly Included | Slightly Included | Included         |



**ADDITIONAL GRADING INFORMATION**

Polish **EXCELLENT**

Symmetry **EXCELLENT**

Fluorescence **SLIGHT**

Inscription(s) **LG803605773**

Comments: This Laboratory Grown Diamond was created by Chemical Vapor Deposition (CVD) growth process.  
Indications of post-growth treatment.



|                         |                                  |                          |                         |                         |                        |                  |                  |                          |                         |
|-------------------------|----------------------------------|--------------------------|-------------------------|-------------------------|------------------------|------------------|------------------|--------------------------|-------------------------|
| <b>May 25, 2026</b>     | <b>IGI Report No LG803605773</b> | <b>3.24 CARATS</b>       | <b>FANCY PINK</b>       | <b>VVS 2</b>            | <b>Medium</b>          | <b>EXCELLENT</b> | <b>EXCELLENT</b> | <b>SLIGHT</b>            | <b>IGI LG803605773</b>  |
| <b>EMERALD ROSE CUT</b> | <b>13.25 X 8.79 X 2.20 MM</b>    | <b>Color Grade</b>       | <b>Clarity Grade</b>    | <b>Depth</b>            | <b>Table</b>           | <b>Graile</b>    | <b>Culet</b>     | <b>Polish</b>            | <b>Symmetry</b>         |
| <b>FL</b>               | <b>IF</b>                        | <b>VVS<sup>1-2</sup></b> | <b>VS<sup>1-2</sup></b> | <b>SI<sup>1-2</sup></b> | <b>I<sup>1-3</sup></b> | <b>FL</b>        | <b>IF</b>        | <b>VVS<sup>1-2</sup></b> | <b>VS<sup>1-2</sup></b> |

**Comments:** This Laboratory Grown Diamond was created by Chemical Vapor Deposition (CVD) growth process. Indications of post-growth treatment.