



ELECTRONIC COPY

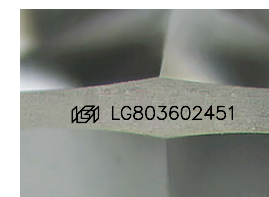
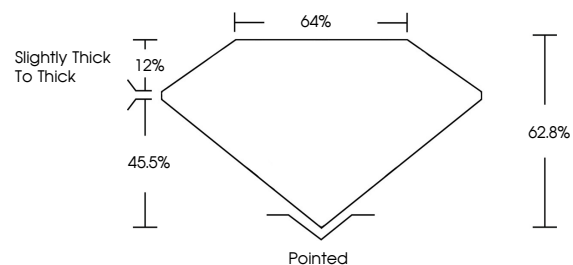
LG803602451
Report verification at igi.org



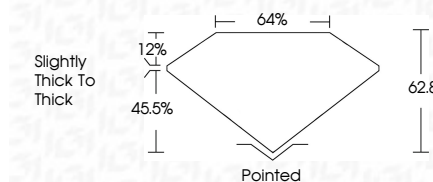
May 22, 2026
IGI Report Number **LG803602451**
Description **LABORATORY GROWN DIAMOND**
Shape and Cutting Style **HEXAGONAL MODIFIED
BRILLIANT**
Measurements **15.66 X 8.12 X 5.10 MM**
GRADING RESULTS
Carat Weight **4.04 CARATS**
Color Grade **G**
Clarity Grade **VS 1**

May 22, 2026
IGI Report Number **LG803602451**
Description **LABORATORY GROWN DIAMOND**
Shape and Cutting Style **HEXAGONAL MODIFIED
BRILLIANT**
Measurements **15.66 X 8.12 X 5.10 MM**
GRADING RESULTS
Carat Weight **4.04 CARATS**
Color Grade **G**
Clarity Grade **VS 1**

PROPORTIONS



Sample Image Used



ADDITIONAL GRADING INFORMATION

Polish **EXCELLENT**
Symmetry **VERY GOOD**
Fluorescence **NONE**
Inscription(s) **IGI LG803602451**

Comments: This Laboratory Grown Diamond was created by Chemical Vapor Deposition (CVD) growth process. Type IIa

ADDITIONAL GRADING INFORMATION

Polish **EXCELLENT**
Symmetry **VERY GOOD**
Fluorescence **NONE**
Inscription(s) **IGI LG803602451**
Comments: This Laboratory Grown Diamond was created by Chemical Vapor Deposition (CVD) growth process. Type IIa

COLOR

D E F G H I J Faint Very Light Light

CLARITY

| FL | IF | VS ¹⁻² | VS ¹⁻² | SI ¹⁻² | I ¹⁻³ |
|----------|---------------------|-----------------------------|------------------------|-------------------|------------------|
| Flawless | Internally Flawless | Very Very Slightly Included | Very Slightly Included | Slightly Included | Included |



IGI



May 22, 2026
IGI Report No. **LG803602451**
HEXAGONAL MODIFIED BRILLIANT
15.66 X 8.12 X 5.10 MM
Carat Weight **4.04 CARATS**
Color Grade **G**
Clarity Grade **VS 1**
Table **62.8%**
Girdle **44%**
Culet **Slightly Thick To Thick**
Polish **Pointed EXCELLENT**
Symmetry **VERY GOOD**
Fluorescence **NONE**
Inscription(s) **IGI LG803602451**
Comments: This Laboratory Grown Diamond was created by Chemical Vapor Deposition (CVD) growth process. Type IIa