



LABORATORY GROWN DIAMOND REPORT

May 29, 2026
 IGI Report Number **LG803601293**
 Description **LABORATORY GROWN DIAMOND**
 Shape and Cutting Style **PEAR BRILLIANT**
 Measurements **7.57 X 5.04 X 3.14 MM**

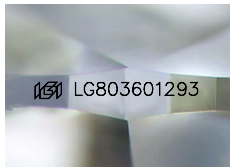
GRADING RESULTS

Carat Weight **0.71 CARAT**
 Color Grade **FANCY INTENSE YELLOW**
 Clarity Grade **VS 2**

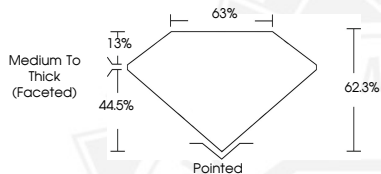
ADDITIONAL GRADING INFORMATION

Polish **VERY GOOD**
 Symmetry **VERY GOOD**
 Fluorescence **NONE**
 Inscription(s) **IGI LG803601293**

Comments: This Laboratory Grown Diamond was created by Chemical Vapor Deposition (CVD) growth process.



Sample Image Used



May 29, 2026

IGI Report Number **LG803601293**
PEAR BRILLIANT
LABORATORY GROWN DIAMOND
7.57 X 5.04 X 3.14 MM

Carat Weight **0.71 CARAT**
 Color Grade **FANCY INTENSE
YELLOW**

Clarity Grade **VS 2**
 Polish **VERY GOOD**
 Symmetry **VERY GOOD**
 Fluorescence **NONE**
 Inscription(s) **IGI LG803601293**

Comments: This Laboratory Grown Diamond was created by Chemical Vapor Deposition (CVD) growth process.



May 29, 2026

IGI Report Number **LG803601293**
PEAR BRILLIANT
LABORATORY GROWN DIAMOND
7.57 X 5.04 X 3.14 MM

Carat Weight **0.71 CARAT**
 Color Grade **FANCY INTENSE
YELLOW**

Clarity Grade **VS 2**
 Polish **VERY GOOD**
 Symmetry **VERY GOOD**
 Fluorescence **NONE**
 Inscription(s) **IGI LG803601293**

Comments: This Laboratory Grown Diamond was created by Chemical Vapor Deposition (CVD) growth process.



THIS DOCUMENT WAS PRODUCED WITH THE FOLLOWING SECURITY MEASURES: SPECIAL DOCUMENT PAPER, INK SCREENS, WATERMARK, BACKGROUND DESIGNS, HOLOGRAM AND OTHER SECURITY FEATURES NOT LISTED AND DO EXCEED DOCUMENT SECURITY INDUSTRY GUIDELINES.