



ELECTRONIC COPY

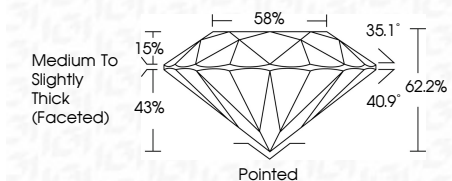
LG802632714 Report verification at igi.org



May 25, 2026 IGI Report Number LG802632714 Description LABORATORY GROWN DIAMOND Shape and Cutting Style ROUND BRILLIANT Measurements 7.39 - 7.42 X 4.61 MM

GRADING RESULTS

Carat Weight 1.56 CARAT Color Grade D Clarity Grade VVS 2 Cut Grade IDEAL



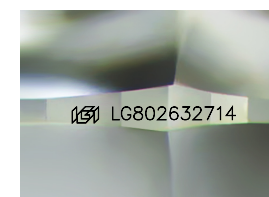
ADDITIONAL GRADING INFORMATION

Polish EXCELLENT Symmetry EXCELLENT Fluorescence NONE Inscription(s) LG802632714 Comments: This Laboratory Grown Diamond was created by Chemical Vapor Deposition (CVD) growth process. Type IIa



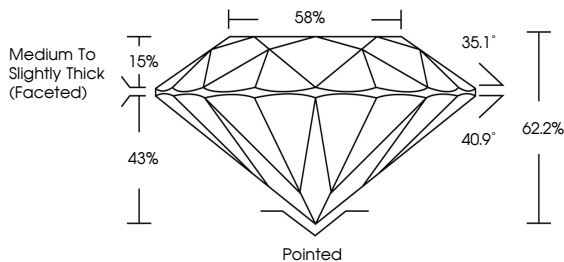
May 25, 2026 IGI Report No LG802632714 ROUND BRILLIANT 1.56 CARAT D 7.39 - 7.42 X 4.61 MM Color Grade D Clarity Grade VVS 2 Cut Grade IDEAL Depth 62.2% Table 88% Pavilion Height 43% Medium To Slightly Thick (Faceted) Gulet Pointed EXCELLENT EXCELLENT NONE NONE LG802632714

Comments: This Laboratory Grown Diamond was created by Chemical Vapor Deposition (CVD) growth process. Type IIa

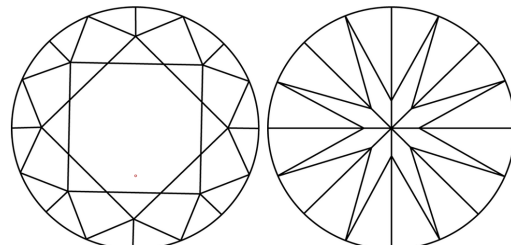


Sample Image Used

PROPORTIONS



CLARITY CHARACTERISTICS



KEY TO SYMBOLS

Red symbols indicate internal characteristics. Green symbols indicate external characteristics.

COLOR

D E F G H I J Faint Very Light Light

CLARITY

FL IF VS 1-2 VS 1-2 SI 1-2 I 1-3 Flawless Internally Flawless Very Very Slightly Included Very Slightly Included Slightly Included Included



May 25, 2026 IGI Report Number LG802632714 Description LABORATORY GROWN DIAMOND Shape and Cutting Style ROUND BRILLIANT Measurements 7.39 - 7.42 X 4.61 MM

GRADING RESULTS

Carat Weight 1.56 CARAT Color Grade D Clarity Grade VVS 2 Cut Grade IDEAL

ADDITIONAL GRADING INFORMATION

Polish EXCELLENT Symmetry EXCELLENT Fluorescence NONE Inscription(s) LG802632714

Comments: This Laboratory Grown Diamond was created by Chemical Vapor Deposition (CVD) growth process. Type IIa