



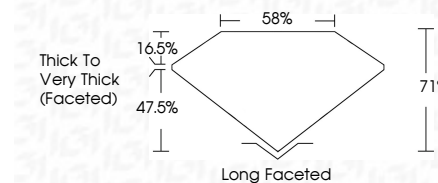
ELECTRONIC COPY

LG802625025
Report verification at igi.org



May 23, 2026
IGI Report Number **LG802625025**
Description **LABORATORY GROWN DIAMOND**
Shape and Cutting Style **CUSHION BRILLIANT**
Measurements **9.41 X 6.79 X 4.82 MM**

GRADING RESULTS
Carat Weight **2.50 CARATS**
Color Grade **FANCY BROWN**
Clarity Grade **VS 2**



ADDITIONAL GRADING INFORMATION
Polish **EXCELLENT**
Symmetry **EXCELLENT**
Fluorescence **NONE**
Inscription(s) **(IGI) LG802625025**
Comments: This Laboratory Grown Diamond was created by Chemical Vapor Deposition (CVD) growth process. Indications of post-growth treatment.



May 23, 2026
IGI Report No LG802625025
CUSHION BRILLIANT
2.50 CARATS
9.41 X 6.79 X 4.82 MM
FANCY BROWN
VS 2
2.50 CARATS
FANCY BROWN
VS 2
9.41 X 6.79 X 4.82 MM
Color Grade
FANCY BROWN
Clarity Grade
VS 2
Depth
71%
Table
58%
Thick to Very Thick (Faceted)
Long Faceted
Polish
EXCELLENT
Symmetry
EXCELLENT
Fluorescence
NONE
Inscription(s)
(IGI) LG802625025
Comments: This Laboratory Grown Diamond was created by Chemical Vapor Deposition (CVD) growth process. Indications of post-growth treatment.

LABORATORY GROWN DIAMOND REPORT

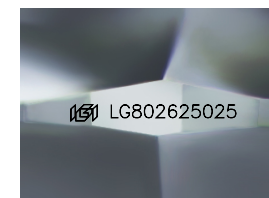
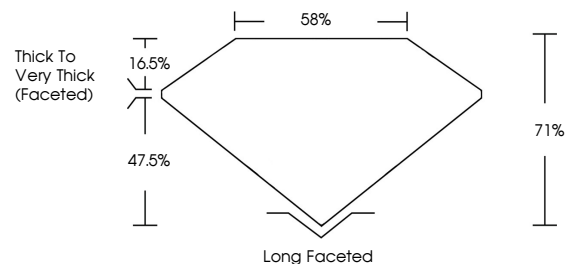
May 23, 2026
IGI Report Number **LG802625025**
Description **LABORATORY GROWN DIAMOND**
Shape and Cutting Style **CUSHION BRILLIANT**
Measurements **9.41 X 6.79 X 4.82 MM**

GRADING RESULTS
Carat Weight **2.50 CARATS**
Color Grade **FANCY BROWN**
Clarity Grade **VS 2**

ADDITIONAL GRADING INFORMATION
Polish **EXCELLENT**
Symmetry **EXCELLENT**
Fluorescence **NONE**
Inscription(s) **(IGI) LG802625025**

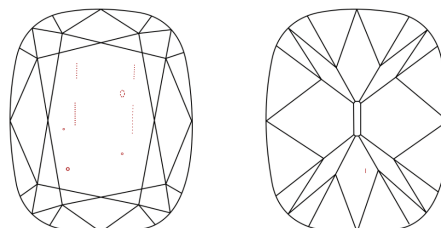
Comments: This Laboratory Grown Diamond was created by Chemical Vapor Deposition (CVD) growth process. Indications of post-growth treatment.

PROPORTIONS



Sample Image Used

CLARITY CHARACTERISTICS



KEY TO SYMBOLS

Red symbols indicate internal characteristics.
Green symbols indicate external characteristics.

COLOR

D E F G H I J Faint Very Light Light

CLARITY

FL	IF	VS ¹⁻²	VS ¹⁻²	SI ¹⁻²	I ¹⁻³
Flawless	Internally Flawless	Very Very Slightly Included	Very Slightly Included	Slightly Included	Included

