



ELECTRONIC COPY

LG802623867 Report verification at igi.org



May 20, 2026 IGI Report Number LG802623867 Description LABORATORY GROWN DIAMOND Shape and Cutting Style CUT CORNERED RECTANGULAR MODIFIED BRILLIANT Measurements 12.21 X 8.71 X 5.79 MM GRADING RESULTS Carat Weight 5.52 CARATS Color Grade E Clarity Grade VVS 2

LABORATORY GROWN DIAMOND REPORT

May 20, 2026 IGI Report Number LG802623867 Description LABORATORY GROWN DIAMOND Shape and Cutting Style CUT CORNERED RECTANGULAR MODIFIED BRILLIANT Measurements 12.21 X 8.71 X 5.79 MM

GRADING RESULTS

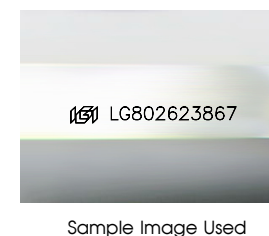
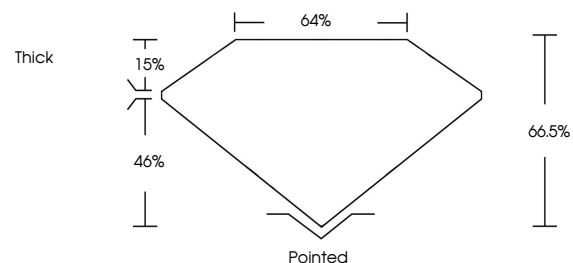
Carat Weight 5.52 CARATS Color Grade E Clarity Grade VVS 2

ADDITIONAL GRADING INFORMATION

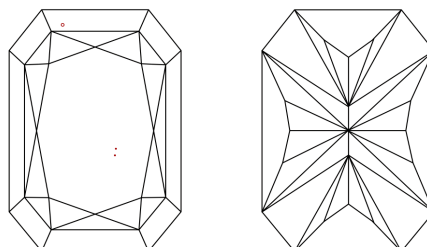
Polish EXCELLENT Symmetry EXCELLENT Fluorescence NONE Inscription(s) LG802623867

Comments: This Laboratory Grown Diamond was created by Chemical Vapor Deposition (CVD) growth process. Type IIa

PROPORTIONS



CLARITY CHARACTERISTICS



KEY TO SYMBOLS

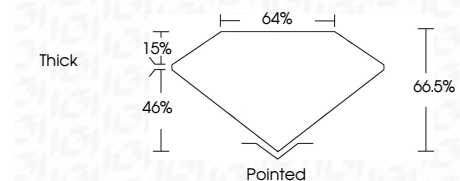
Red symbols indicate internal characteristics. Green symbols indicate external characteristics.

COLOR

D E F G H I J Faint Very Light Light

CLARITY

FL IF VVS 1-2 VS 1-2 SI 1-2 I 1-3 Flawless Internally Flawless Very Very Slightly Included Very Slightly Included Slightly Included Included



ADDITIONAL GRADING INFORMATION

Polish EXCELLENT Symmetry EXCELLENT Fluorescence NONE Inscription(s) LG802623867 Comments: This Laboratory Grown Diamond was created by Chemical Vapor Deposition (CVD) growth process. Type IIa



May 20, 2026 IGI Report No LG802623867 CUT CORNERED RECT. MODIFIED BRILLIANT 12.21 X 8.71 X 5.79 MM 5.52 CARATS E VVS 2 66.5% 64% Thick Pointed EXCELLENT EXCELLENT NONE LG802623867 Comments: This Laboratory Grown Diamond was created by Chemical Vapor Deposition (CVD) growth process. Type IIa