



ELECTRONIC COPY

LG802623561
Report verification at igi.org



May 20, 2026
IGI Report Number **LG802623561**
Description **LABORATORY GROWN DIAMOND**
Shape and Cutting Style **ROUND BRILLIANT**
Measurements **6.47 - 6.54 X 4.01 MM**
GRADING RESULTS
Carat Weight **1.03 CARAT**
Color Grade **FANCY INTENSE PINK**
Clarity Grade **VVS 2**
Cut Grade **IDEAL**

May 20, 2026
IGI Report Number **LG802623561**
Description **LABORATORY GROWN DIAMOND**
Shape and Cutting Style **ROUND BRILLIANT**
Measurements **6.47 - 6.54 X 4.01 MM**

GRADING RESULTS

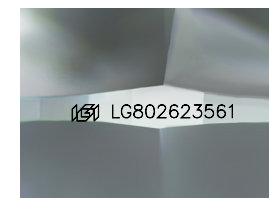
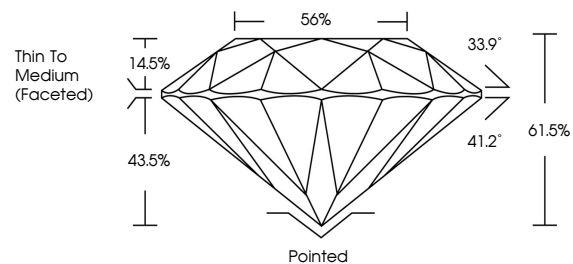
Carat Weight **1.03 CARAT**
Color Grade **FANCY INTENSE PINK**
Clarity Grade **VVS 2**
Cut Grade **IDEAL**

ADDITIONAL GRADING INFORMATION

Polish **EXCELLENT**
Symmetry **EXCELLENT**
Fluorescence **SLIGHT**
Inscription(s) **IGI LG802623561**

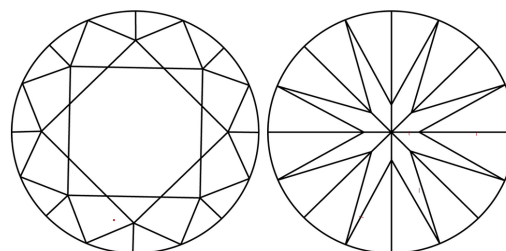
Comments: This Laboratory Grown Diamond was created by Chemical Vapor Deposition (CVD) growth process.
Indications of post-growth treatment.

PROPORTIONS



Sample Image Used

CLARITY CHARACTERISTICS



KEY TO SYMBOLS

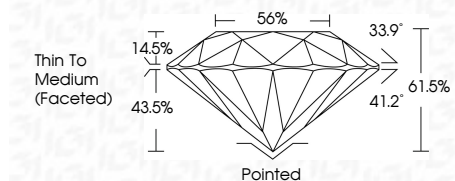
Red symbols indicate internal characteristics.
Green symbols indicate external characteristics.

COLOR

D E F G H I J Faint Very Light Light

CLARITY

FL	IF	VVS ¹⁻²	VS ¹⁻²	SI ¹⁻²	I ¹⁻³
Flawless	Internally Flawless	Very Very Slightly Included	Very Slightly Included	Slightly Included	Included



ADDITIONAL GRADING INFORMATION

Polish **EXCELLENT**
Symmetry **EXCELLENT**
Fluorescence **SLIGHT**
Inscription(s) **IGI LG802623561**
Comments: This Laboratory Grown Diamond was created by Chemical Vapor Deposition (CVD) growth process.
Indications of post-growth treatment.



May 20, 2026
IGI Report No. LG802623561
ROUND BRILLIANT
6.47 - 6.54 X 4.01 MM
1.03 CARAT
FANCY INTENSE PINK
VVS 2
IDEAL
61.5%
56%
Thin To Medium (Faceted)
Pointed
EXCELLENT
EXCELLENT
SLIGHT
IGI LG802623561
Comments: This Laboratory Grown Diamond was created by Chemical Vapor Deposition (CVD) growth process.
Indications of post-growth treatment.