



**ELECTRONIC COPY**

LG802623539  
Report verification at igi.org



May 20, 2026  
IGI Report Number **LG802623539**  
Description **LABORATORY GROWN DIAMOND**  
Shape and Cutting Style **ROUND BRILLIANT**  
Measurements **8.04 - 8.09 X 5.01 MM**  
**GRADING RESULTS**  
Carat Weight **2.01 CARATS**  
Color Grade **FANCY BROWNISH PINK**  
Clarity Grade **VVS 2**  
Cut Grade **IDEAL**

**LABORATORY GROWN DIAMOND REPORT**

May 20, 2026  
IGI Report Number **LG802623539**  
Description **LABORATORY GROWN DIAMOND**  
Shape and Cutting Style **ROUND BRILLIANT**  
Measurements **8.04 - 8.09 X 5.01 MM**

**GRADING RESULTS**

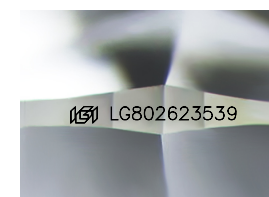
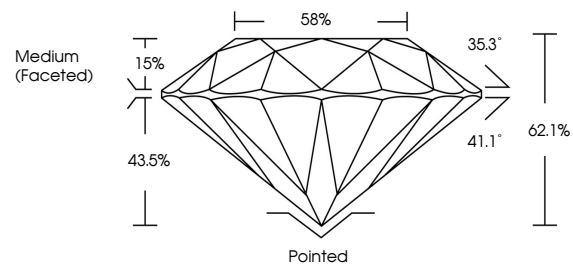
Carat Weight **2.01 CARATS**  
Color Grade **FANCY BROWNISH PINK**  
Clarity Grade **VVS 2**  
Cut Grade **IDEAL**

**ADDITIONAL GRADING INFORMATION**

Polish **EXCELLENT**  
Symmetry **EXCELLENT**  
Fluorescence **SLIGHT**  
Inscription(s) **LG802623539**

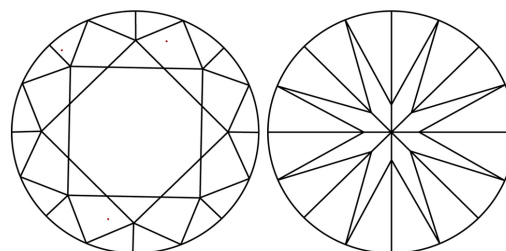
Comments: This Laboratory Grown Diamond was created by Chemical Vapor Deposition (CVD) growth process.  
Indications of post-growth treatment.

**PROPORTIONS**



Sample Image Used

**CLARITY CHARACTERISTICS**



**KEY TO SYMBOLS**

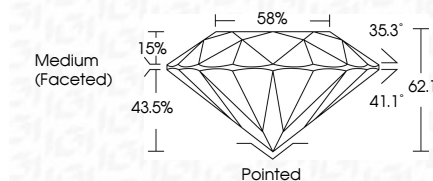
Red symbols indicate internal characteristics.  
Green symbols indicate external characteristics.

**COLOR**

D E F G H I J Faint Very Light Light

**CLARITY**

FL	IF	VVS <sup>1-2</sup>	VS <sup>1-2</sup>	SI <sup>1-2</sup>	I <sup>1-3</sup>
Flawless	Internally Flawless	Very Very Slightly Included	Very Slightly Included	Slightly Included	Included



**ADDITIONAL GRADING INFORMATION**

Polish **EXCELLENT**  
Symmetry **EXCELLENT**  
Fluorescence **SLIGHT**  
Inscription(s) **LG802623539**  
Comments: This Laboratory Grown Diamond was created by Chemical Vapor Deposition (CVD) growth process.  
Indications of post-growth treatment.



May 20, 2026  
IGI Report No. **LG802623539**  
**ROUND BRILLIANT**  
**8.04 - 8.09 X 5.01 MM**  
Carat Weight **2.01 CARATS**  
Color Grade **FANCY BROWNISH PINK**  
Clarity Grade **VVS 2**  
Cut Grade **IDEAL**  
Depth **62.1%**  
Table **15%**  
Girdle **Medium (Faceted)**  
Culet **Pointed**  
Polish **EXCELLENT**  
Symmetry **EXCELLENT**  
Fluorescence **SLIGHT**  
Inscription(s) **LG802623539**  
Comments: This Laboratory Grown Diamond was created by Chemical Vapor Deposition (CVD) growth process.  
Indications of post-growth treatment.