



**ELECTRONIC COPY**

LG802623523  
Report verification at igi.org



May 20, 2026  
IGI Report Number **LG802623523**  
Description **LABORATORY GROWN DIAMOND**  
Shape and Cutting Style **ROUND BRILLIANT**  
Measurements **8.13 - 8.16 X 4.86 MM**  
**GRADING RESULTS**  
Carat Weight **2.00 CARATS**  
Color Grade **FANCY BROWNISH PINK**  
Clarity Grade **VVS 2**  
Cut Grade **EXCELLENT**

May 20, 2026  
IGI Report Number **LG802623523**  
Description **LABORATORY GROWN DIAMOND**  
Shape and Cutting Style **ROUND BRILLIANT**  
Measurements **8.13 - 8.16 X 4.86 MM**

**GRADING RESULTS**

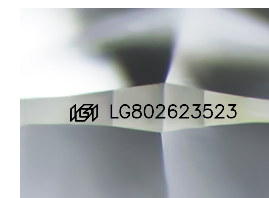
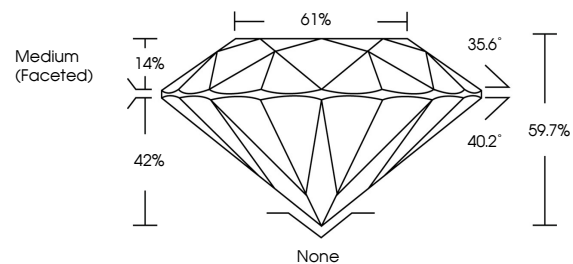
Carat Weight **2.00 CARATS**  
Color Grade **FANCY BROWNISH PINK**  
Clarity Grade **VVS 2**  
Cut Grade **EXCELLENT**

**ADDITIONAL GRADING INFORMATION**

Polish **EXCELLENT**  
Symmetry **EXCELLENT**  
Fluorescence **SLIGHT**  
Inscription(s) **IGI LG802623523**

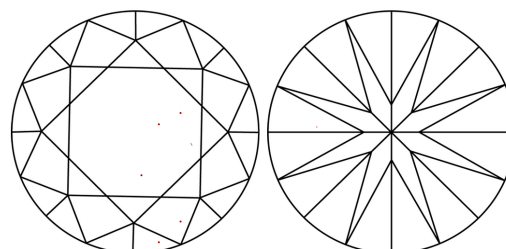
Comments: This Laboratory Grown Diamond was created by Chemical Vapor Deposition (CVD) growth process.  
Indications of post-growth treatment.

**PROPORTIONS**



Sample Image Used

**CLARITY CHARACTERISTICS**



**KEY TO SYMBOLS**

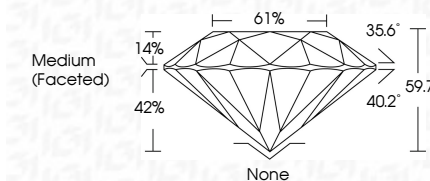
Red symbols indicate internal characteristics.  
Green symbols indicate external characteristics.

**COLOR**

D E F G H I J Faint Very Light Light

**CLARITY**

| FL       | IF                  | VVS <sup>1-2</sup>          | VS <sup>1-2</sup>      | SI <sup>1-2</sup> | I <sup>1-3</sup> |
|----------|---------------------|-----------------------------|------------------------|-------------------|------------------|
| Flawless | Internally Flawless | Very Very Slightly Included | Very Slightly Included | Slightly Included | Included         |



**ADDITIONAL GRADING INFORMATION**

Polish **EXCELLENT**  
Symmetry **EXCELLENT**  
Fluorescence **SLIGHT**  
Inscription(s) **IGI LG802623523**  
Comments: This Laboratory Grown Diamond was created by Chemical Vapor Deposition (CVD) growth process.  
Indications of post-growth treatment.



**IGI**



May 20, 2026  
IGI Report No. LG802623523  
**ROUND BRILLIANT**  
8.13 - 8.16 X 4.86 MM  
2.00 CARATS  
FANCY BROWNISH PINK  
VVS 2  
EXCELLENT  
61%  
Medium (Faceted)  
None  
EXCELLENT  
EXCELLENT  
SLIGHT  
SLIGHT  
IGI LG802623523  
Comments: This Laboratory Grown Diamond was created by Chemical Vapor Deposition (CVD) growth process.  
Indications of post-growth treatment.