



**ELECTRONIC COPY**

LG802623125  
Report verification at igi.org



May 18, 2026

IGI Report Number **LG802623125**

Description **LABORATORY GROWN DIAMOND**

Shape and Cutting Style **ROUND BRILLIANT**

Measurements **6.43 - 6.49 X 3.85 MM**

**GRADING RESULTS**

Carat Weight **1.00 CARAT**

Color Grade **E**

Clarity Grade **VS 1**

Cut Grade **VERY GOOD**

May 18, 2026

IGI Report Number **LG802623125**

Description **LABORATORY GROWN DIAMOND**

Shape and Cutting Style **ROUND BRILLIANT**

Measurements **6.43 - 6.49 X 3.85 MM**

**GRADING RESULTS**

Carat Weight **1.00 CARAT**

Color Grade **E**

Clarity Grade **VS 1**

Cut Grade **VERY GOOD**

**ADDITIONAL GRADING INFORMATION**

Polish **EXCELLENT**

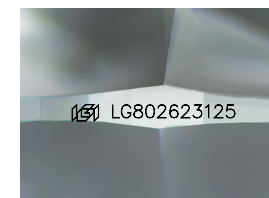
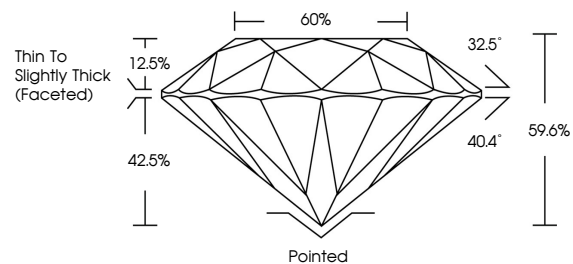
Symmetry **GOOD**

Fluorescence **NONE**

Inscription(s) **IGI LG802623125**

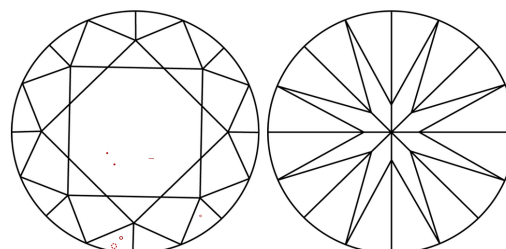
Comments: This Laboratory Grown Diamond was created by Chemical Vapor Deposition (CVD) growth process.  
Type IIa

**PROPORTIONS**



Sample Image Used

**CLARITY CHARACTERISTICS**



**KEY TO SYMBOLS**

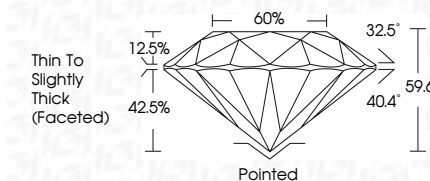
Red symbols indicate internal characteristics.  
Green symbols indicate external characteristics.

**COLOR**

D E F G H I J Faint Very Light Light

**CLARITY**

FL	IF	VS <sup>1-2</sup>	VS <sup>1-2</sup>	SI <sup>1-2</sup>	I <sup>1-3</sup>
Flawless	Internally Flawless	Very Very Slightly Included	Very Slightly Included	Slightly Included	Included



**ADDITIONAL GRADING INFORMATION**

Polish **EXCELLENT**

Symmetry **GOOD**

Fluorescence **NONE**

Inscription(s) **IGI LG802623125**

Comments: This Laboratory Grown Diamond was created by Chemical Vapor Deposition (CVD) growth process.  
Type IIa



**IGI**



May 18, 2026	1.00 CARAT	E	VS 1	60%	Pointed
IGI Report No LG802623125	6.43 - 6.49 X 3.85 MM	VERY GOOD	59.6%	40.4°	EXCELLENT
ROUND BRILLIANT				12.5%	GOOD
Carat Weight				42.5%	NONE
Color Grade				Thin To Slightly Thick (Faceted)	IGI LG802623125
Clarity Grade					
Cut Grade					
Depth					
Table					
Girdle					
Culet					
Polish					
Symmetry					
Fluorescence					
Inscription(s)					

Comments: This Laboratory Grown Diamond was created by Chemical Vapor Deposition (CVD) growth process.  
Type IIa