



**ELECTRONIC COPY**

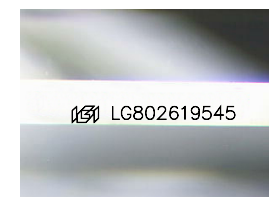
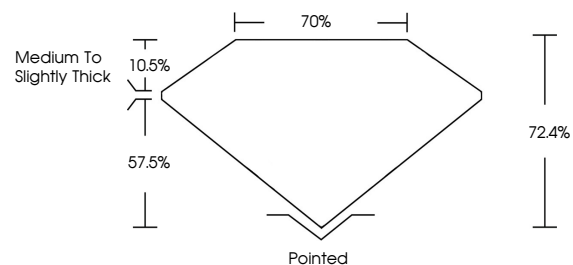
LG802619545  
Report verification at igi.org



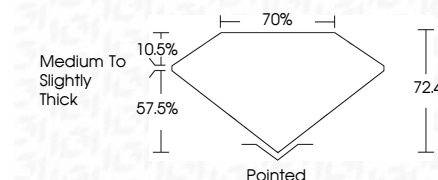
May 21, 2026  
IGI Report Number **LG802619545**  
Description **LABORATORY GROWN DIAMOND**  
Shape and Cutting Style **PRINCESS CUT**  
Measurements **9.16 X 8.79 X 6.36 MM**  
**GRADING RESULTS**  
Carat Weight **4.55 CARATS**  
Color Grade **E**  
Clarity Grade **VS 2**

May 21, 2026  
IGI Report Number **LG802619545**  
Description **LABORATORY GROWN DIAMOND**  
Shape and Cutting Style **PRINCESS CUT**  
Measurements **9.16 X 8.79 X 6.36 MM**  
**GRADING RESULTS**  
Carat Weight **4.55 CARATS**  
Color Grade **E**  
Clarity Grade **VS 2**

**PROPORTIONS**



Sample Image Used



**ADDITIONAL GRADING INFORMATION**

Polish **EXCELLENT**  
Symmetry **EXCELLENT**  
Fluorescence **NONE**  
Inscription(s) **IGI LG802619545**

Comments: This Laboratory Grown Diamond was created by Chemical Vapor Deposition (CVD) growth process.  
Type IIa

**ADDITIONAL GRADING INFORMATION**

Polish **EXCELLENT**  
Symmetry **EXCELLENT**  
Fluorescence **NONE**  
Inscription(s) **IGI LG802619545**  
Comments: This Laboratory Grown Diamond was created by Chemical Vapor Deposition (CVD) growth process.  
Type IIa

**COLOR**

D E F G H I J Faint Very Light Light

**CLARITY**

FL	IF	VS <sup>1-2</sup>	VS <sup>1-2</sup>	SI <sup>1-2</sup>	I <sup>1-3</sup>
Flawless	Internally Flawless	Very Very Slightly Included	Very Slightly Included	Slightly Included	Included



**IGI**



May 21, 2026  
IGI Report No **LG802619545**  
**PRINCESS CUT**  
**9.16 X 8.79 X 6.36 MM**  
**4.55 CARATS**  
**E**  
**VS 2**  
**72.4%**  
**70%**  
**Medium to Slightly Thick**  
**Pointed**  
**EXCELLENT**  
**EXCELLENT**  
**NONE**  
**IGI LG802619545**

Comments: This Laboratory Grown Diamond was created by Chemical Vapor Deposition (CVD) growth process.  
Type IIa