



**ELECTRONIC COPY**

LG802616098  
Report verification at igi.org



June 10, 2026  
IGI Report Number **LG802616098**  
Description **LABORATORY GROWN DIAMOND**  
Shape and Cutting Style **SQUARE CUSHION MIXED CUT**  
Measurements **13.05 X 12.87 X 6.42 MM**  
**GRADING RESULTS**  
Carat Weight **9.22 CARATS**  
Color Grade **D**  
Clarity Grade **VS 1**

**LABORATORY GROWN DIAMOND REPORT**

June 10, 2026  
IGI Report Number **LG802616098**  
Description **LABORATORY GROWN DIAMOND**  
Shape and Cutting Style **SQUARE CUSHION MIXED CUT**  
Measurements **13.05 X 12.87 X 6.42 MM**

**GRADING RESULTS**

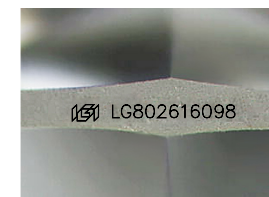
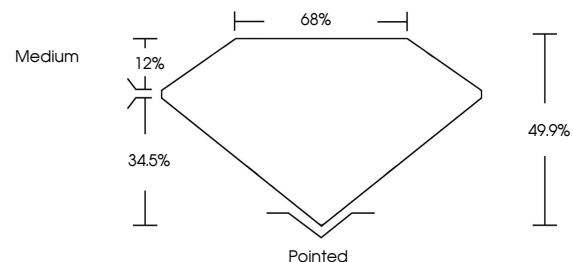
Carat Weight **9.22 CARATS**  
Color Grade **D**  
Clarity Grade **VS 1**

**ADDITIONAL GRADING INFORMATION**

Polish **EXCELLENT**  
Symmetry **EXCELLENT**  
Fluorescence **NONE**  
Inscription(s) **IGI LG802616098**

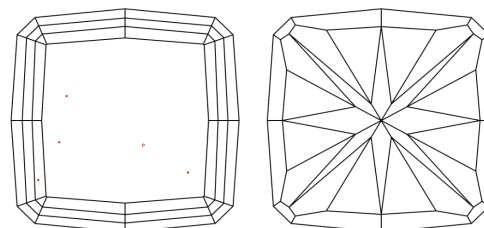
Comments: This Laboratory Grown Diamond was created by Chemical Vapor Deposition (CVD) growth process. Type IIa

**PROPORTIONS**



Sample Image Used

**CLARITY CHARACTERISTICS**



**KEY TO SYMBOLS**

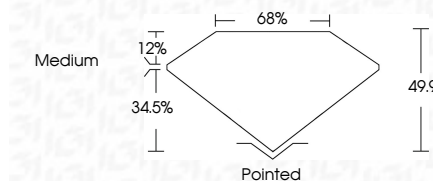
Red symbols indicate internal characteristics.  
Green symbols indicate external characteristics.

**COLOR**

D E F G H I J Faint Very Light Light

**CLARITY**

FL	IF	VS <sup>1-2</sup>	VS <sup>1-2</sup>	SI <sup>1-2</sup>	I <sup>1-3</sup>
Flawless	Internally Flawless	Very Very Slightly Included	Very Slightly Included	Slightly Included	Included



**ADDITIONAL GRADING INFORMATION**

Polish **EXCELLENT**  
Symmetry **EXCELLENT**  
Fluorescence **NONE**  
Inscription(s) **IGI LG802616098**  
Comments: This Laboratory Grown Diamond was created by Chemical Vapor Deposition (CVD) growth process. Type IIa



June 10, 2026  
IGI Report No. LG802616098  
SQUARE CUSHION MIXED CUT  
13.05 X 12.87 X 6.42 MM  
9.22 CARATS  
D  
Color Grade  
VS 1  
49.9%  
65%  
Medium  
Pointed  
EXCELLENT  
EXCELLENT  
NONE  
IGI LG802616098  
Comments: This Laboratory Grown Diamond was created by Chemical Vapor Deposition (CVD) growth process. Type IIa