



LABORATORY GROWN DIAMOND REPORT

May 18, 2026
 IGI Report Number **LG802614007**
 Description **LABORATORY GROWN DIAMOND**
 Shape and Cutting Style **PEAR BRILLIANT**
 Measurements **7.21 X 4.42 X 2.73 MM**

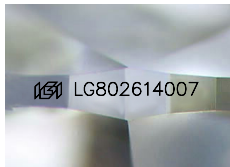
GRADING RESULTS

Carat Weight **0.54 CARAT**
 Color Grade **F**
 Clarity Grade **VVS 1**

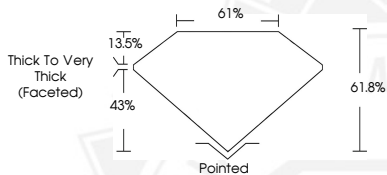
ADDITIONAL GRADING INFORMATION

Polish **EXCELLENT**
 Symmetry **VERY GOOD**
 Fluorescence **NONE**
 Inscription(s) **IGI LG802614007**

Comments: This Laboratory Grown Diamond was created by Chemical Vapor Deposition (CVD) growth process. Type IIa



Sample Image Used



May 18, 2026
 IGI Report Number **LG802614007**
PEAR BRILLIANT
LABORATORY GROWN DIAMOND
7.21 X 4.42 X 2.73 MM
 Carat Weight **0.54 CARAT**
 Color Grade **F**
 Clarity Grade **VVS 1**
 Polish **EXCELLENT**
 Symmetry **VERY GOOD**
 Fluorescence **NONE**
 Inscription(s) **IGI LG802614007**

Comments: This Laboratory Grown Diamond was created by Chemical Vapor Deposition (CVD) growth process. Type IIa



May 18, 2026
 IGI Report Number **LG802614007**
PEAR BRILLIANT
LABORATORY GROWN DIAMOND
7.21 X 4.42 X 2.73 MM
 Carat Weight **0.54 CARAT**
 Color Grade **F**
 Clarity Grade **VVS 1**
 Polish **EXCELLENT**
 Symmetry **VERY GOOD**
 Fluorescence **NONE**
 Inscription(s) **IGI LG802614007**

Comments: This Laboratory Grown Diamond was created by Chemical Vapor Deposition (CVD) growth process. Type IIa



THIS DOCUMENT WAS PRODUCED WITH THE FOLLOWING SECURITY MEASURES: SPECIAL DOCUMENT PAPER, INK SCREENS, WATERMARK, BACKGROUND DESIGNS, HOLOGRAM AND OTHER SECURITY FEATURES NOT LISTED AND DO EXCEED DOCUMENT SECURITY INDUSTRY GUIDELINES.