



ELECTRONIC COPY

LG802611927
Report verification at igi.org



May 22, 2026
IGI Report Number **LG802611927**
Description **LABORATORY GROWN DIAMOND**
Shape and Cutting Style **SQUARE CUSHION MODIFIED BRILLIANT**
Measurements **10.20 X 10.10 X 6.36 MM**
GRADING RESULTS
Carat Weight **6.16 CARATS**
Color Grade **FANCY VIVID RED**
Clarity Grade **VS 1**

LABORATORY GROWN DIAMOND REPORT

May 22, 2026
IGI Report Number **LG802611927**
Description **LABORATORY GROWN DIAMOND**
Shape and Cutting Style **SQUARE CUSHION MODIFIED BRILLIANT**
Measurements **10.20 X 10.10 X 6.36 MM**

GRADING RESULTS

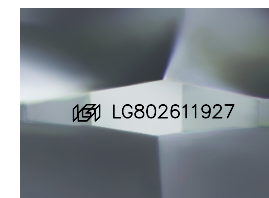
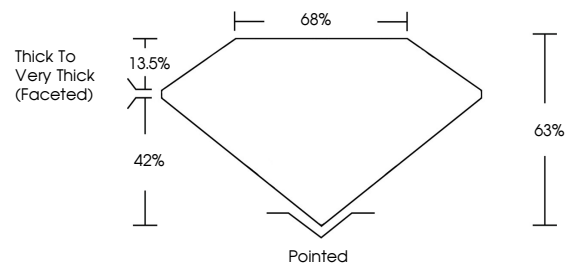
Carat Weight **6.16 CARATS**
Color Grade **FANCY VIVID RED**
Clarity Grade **VS 1**

ADDITIONAL GRADING INFORMATION

Polish **EXCELLENT**
Symmetry **EXCELLENT**
Fluorescence **SLIGHT**
Inscription(s) **IGI LG802611927**

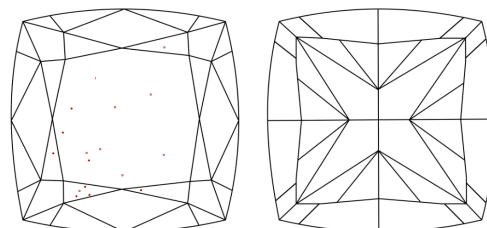
Comments: This Laboratory Grown Diamond was created by Chemical Vapor Deposition (CVD) growth process.
Indications of post-growth treatment.

PROPORTIONS



Sample Image Used

CLARITY CHARACTERISTICS



KEY TO SYMBOLS

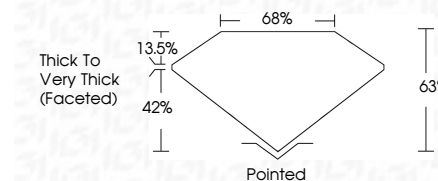
Red symbols indicate internal characteristics.
Green symbols indicate external characteristics.

COLOR

D E F G H I J Faint Very Light Light

CLARITY

FL	IF	VS ¹⁻²	VS ¹⁻²	SI ¹⁻²	I ¹⁻³
Flawless	Internally Flawless	Very Very Slightly Included	Very Slightly Included	Slightly Included	Included



ADDITIONAL GRADING INFORMATION

Polish **EXCELLENT**
Symmetry **EXCELLENT**
Fluorescence **SLIGHT**
Inscription(s) **IGI LG802611927**
Comments: This Laboratory Grown Diamond was created by Chemical Vapor Deposition (CVD) growth process.
Indications of post-growth treatment.



May 22, 2026
IGI Report No. LG802611927
SQUARE CUSHION MODIFIED BRILLIANT
10.20 X 10.10 X 6.36 MM
6.16 CARATS
FANCY VIVID RED
VS 1
68%
68%
Thick to Very Thick (Faceted)
Pointed
EXCELLENT
EXCELLENT
SLIGHT
IGI LG802611927
Comments: This Laboratory Grown Diamond was created by Chemical Vapor Deposition (CVD) growth process.
Indications of post-growth treatment.