



ELECTRONIC COPY

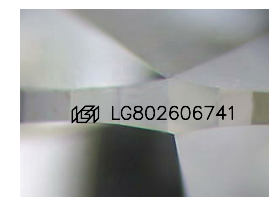
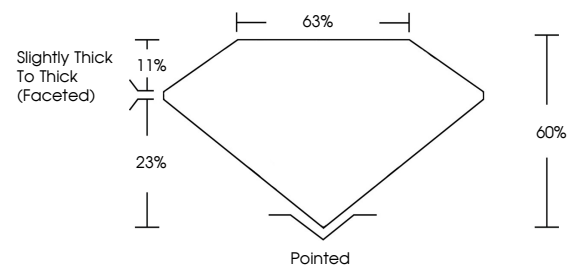
LG802606741
Report verification at igi.org



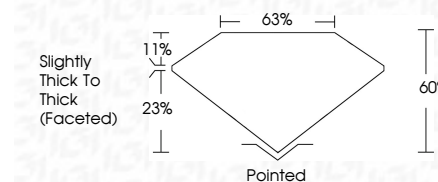
May 21, 2026
IGI Report Number **LG802606741**
Description **LABORATORY GROWN DIAMOND**
Shape and Cutting Style **HEART MODIFIED BRILLIANT**
Measurements **8.34 X 9.44 X 5.66 MM**
GRADING RESULTS
Carat Weight **3.57 CARATS**
Color Grade **FANCY INTENSE YELLOW**
Clarity Grade **VS 1**

May 21, 2026
IGI Report Number **LG802606741**
Description **LABORATORY GROWN DIAMOND**
Shape and Cutting Style **HEART MODIFIED BRILLIANT**
Measurements **8.34 X 9.44 X 5.66 MM**
GRADING RESULTS
Carat Weight **3.57 CARATS**
Color Grade **FANCY INTENSE YELLOW**
Clarity Grade **VS 1**

PROPORTIONS



Sample Image Used



ADDITIONAL GRADING INFORMATION

Polish **EXCELLENT**
Symmetry **EXCELLENT**
Fluorescence **NONE**
Inscription(s) **IGI LG802606741**

Comments: This Laboratory Grown Diamond was created by Chemical Vapor Deposition (CVD) growth process.

ADDITIONAL GRADING INFORMATION

Polish **EXCELLENT**
Symmetry **EXCELLENT**
Fluorescence **NONE**
Inscription(s) **IGI LG802606741**

Comments: This Laboratory Grown Diamond was created by Chemical Vapor Deposition (CVD) growth process.

COLOR

D E F G H I J Faint Very Light Light

CLARITY

| FL | IF | VS ¹⁻² | VS ¹⁻² | SI ¹⁻² | I ¹⁻³ |
|----------|---------------------|-----------------------------|------------------------|-------------------|------------------|
| Flawless | Internally Flawless | Very Very Slightly Included | Very Slightly Included | Slightly Included | Included |



IGI



May 21, 2026
IGI Report No **LG802606741**
HEART MODIFIED BRILLIANT
8.34 X 9.44 X 5.66 MM
Carat Weight **3.57 CARATS**
Color Grade **FANCY INTENSE YELLOW**
Clarity Grade **VS 1**
Depth **60%**
Table **63%**
Girdle **Slightly Thick To Thick (Faceted)**
Culet **Pointed**
Polish **EXCELLENT**
Symmetry **EXCELLENT**
Fluorescence **NONE**
Inscription(s) **IGI LG802606741**

Comments: This Laboratory Grown Diamond was created by Chemical Vapor Deposition (CVD) growth process.