



May 19, 2026

IGI Report Number LG801696870

PEAR BRILLIANT

LABORATORY GROWN DIAMOND

6.75 X 4.34 X 2.85 MM

Carat Weight **0.50 CARAT**

Color Grade **E**

Clarity Grade **VS 1**

Polish **EXCELLENT**

Symmetry **VERY GOOD**

Fluorescence **NONE**

Inscription(s) LG801696870

Comments: As Grown - No indication of post-growth treatment. This Laboratory Grown Diamond was created by High Pressure High Temperature (HPHT) growth process. Type II

**LABORATORY GROWN DIAMOND REPORT**

May 19, 2026

IGI Report Number

LG801696870

Description

LABORATORY GROWN DIAMOND

Shape and Cutting Style

PEAR BRILLIANT

Measurements

6.75 X 4.34 X 2.85 MM

**GRADING RESULTS**

Carat Weight

0.50 CARAT

Color Grade

E

Clarity Grade

VS 1

**ADDITIONAL GRADING INFORMATION**

Polish

EXCELLENT

Symmetry

VERY GOOD

Fluorescence

NONE

Inscription(s)

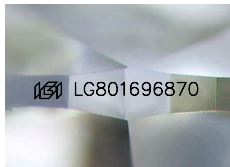
LG801696870

Comments: As Grown - No indication of post-growth treatment.

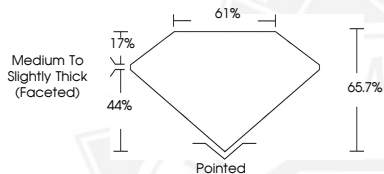
This Laboratory Grown Diamond was created by High Pressure High

Temperature (HPHT) growth process.

Type II



Sample Image Used



May 19, 2026

IGI Report Number LG801696870

PEAR BRILLIANT

LABORATORY GROWN DIAMOND

6.75 X 4.34 X 2.85 MM

Carat Weight **0.50 CARAT**

Color Grade **E**

Clarity Grade **VS 1**

Polish **EXCELLENT**

Symmetry **VERY GOOD**

Fluorescence **NONE**

Inscription(s) LG801696870

Comments: As Grown - No indication of post-growth treatment. This Laboratory Grown Diamond was created by High Pressure High Temperature (HPHT) growth process. Type II



THIS DOCUMENT WAS PRODUCED WITH THE FOLLOWING SECURITY MEASURES: SPECIAL DOCUMENT PAPER, INK SCREENS, WATERMARK, BACKGROUND DESIGNS, HOLOGRAM AND OTHER SECURITY FEATURES NOT LISTED AND DO EXCEED DOCUMENT SECURITY INDUSTRY GUIDELINES.