



**ELECTRONIC COPY**

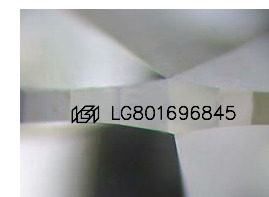
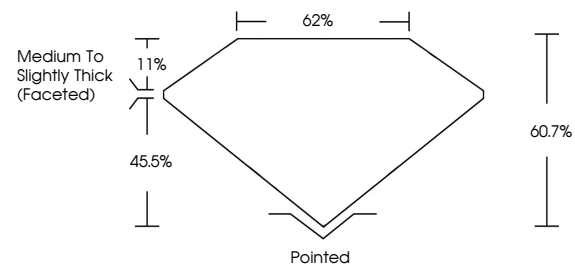
LG801696845  
Report verification at [igi.org](http://igi.org)



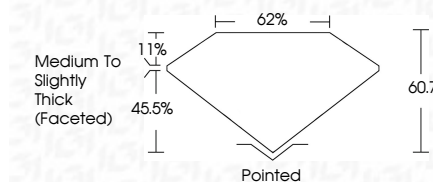
May 19, 2026  
IGI Report Number **LG801696845**  
Description **LABORATORY GROWN DIAMOND**  
Shape and Cutting Style **OVAL BRILLIANT**  
Measurements **9.10 X 5.98 X 3.63 MM**  
**GRADING RESULTS**  
Carat Weight **1.21 CARAT**  
Color Grade **D**  
Clarity Grade **VVS 2**

May 19, 2026  
IGI Report Number **LG801696845**  
Description **LABORATORY GROWN DIAMOND**  
Shape and Cutting Style **OVAL BRILLIANT**  
Measurements **9.10 X 5.98 X 3.63 MM**  
**GRADING RESULTS**  
Carat Weight **1.21 CARAT**  
Color Grade **D**  
Clarity Grade **VVS 2**

**PROPORTIONS**



Sample Image Used



**ADDITIONAL GRADING INFORMATION**  
Polish **VERY GOOD**  
Symmetry **VERY GOOD**  
Fluorescence **NONE**  
Inscription(s) **IGI LG801696845**  
Comments: As Grown - No indication of post-growth treatment.  
This Laboratory Grown Diamond was created by High Pressure High Temperature (HPHT) growth process. Type II

**COLOR**

D E F G H I J Faint Very Light Light

**CLARITY**

FL	IF	VVS <sup>1-2</sup>	VS <sup>1-2</sup>	SI <sup>1-2</sup>	I <sup>1-3</sup>
Flawless	Internally Flawless	Very Very Slightly Included	Very Slightly Included	Slightly Included	Included

**ADDITIONAL GRADING INFORMATION**

Polish **VERY GOOD**  
Symmetry **VERY GOOD**  
Fluorescence **NONE**  
Inscription(s) **IGI LG801696845**  
Comments: As Grown - No indication of post-growth treatment.  
This Laboratory Grown Diamond was created by High Pressure High Temperature (HPHT) growth process. Type II



May 19, 2026  
IGI Report No LG801696845  
OVAL BRILLIANT  
1.21 CARAT  
D  
9.10 X 5.98 X 3.63 MM  
Carat Weight  
Color Grade  
Clarity Grade  
Depth  
Table  
Girdle  
Medium to Slightly Thick (Faceted)  
Culet  
Polish  
Symmetry  
Fluorescence  
Inscription(s)  
Pointed  
VERY GOOD  
VERY GOOD  
NONE  
IGI LG801696845  
Comments: As Grown - No indication of post-growth treatment.  
This Laboratory Grown Diamond was created by High Pressure High Temperature (HPHT) growth process. Type II