



ELECTRONIC COPY

LG801693907 Report verification at igi.org

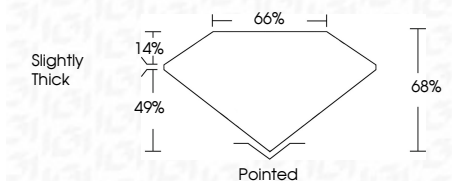


June 30, 2026 IGI Report Number LG801693907 Description LABORATORY GROWN DIAMOND Shape and Cutting Style CUT CORNERED RECTANGULAR MODIFIED BRILLIANT

Measurements 8.34 X 5.62 X 3.82 MM

GRADING RESULTS

Carat Weight 1.58 CARAT Color Grade D Clarity Grade FLAWLESS



ADDITIONAL GRADING INFORMATION

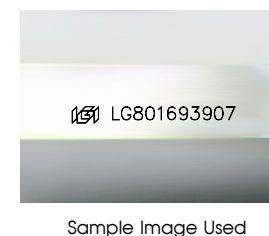
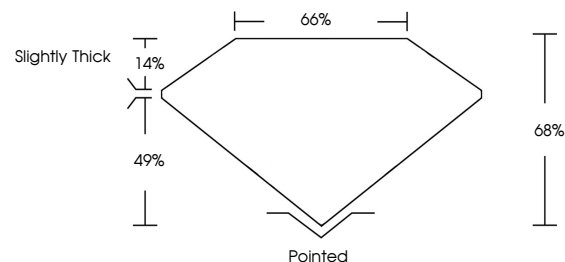
Polish EXCELLENT Symmetry EXCELLENT Fluorescence NONE Inscription(s) LG801693907 Comments: As Grown - No indication of post-growth treatment. This Laboratory Grown Diamond was created by High Pressure High Temperature (HPHT) growth process. Type II



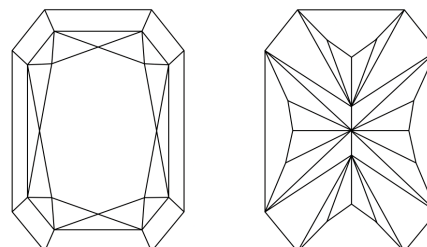
IGI



PROPORTIONS



CLARITY CHARACTERISTICS



KEY TO SYMBOLS

Red symbols indicate internal characteristics. Green symbols indicate external characteristics.

COLOR

D E F G H I J Faint Very Light Light

CLARITY

FL IF VS 1-2 VS 1-2 SI 1-2 I 1-3 Flawless Internally Flawless Very Very Slightly Included Very Slightly Included Slightly Included Included

June 30, 2026 IGI Report No LG801693907 CUT CORNERED RECT. MODIFIED BRILLIANT 8.34 X 5.62 X 3.82 MM 1.58 CARAT D FLAWLESS EXCELLENT EXCELLENT NONE NONE LG801693907

Comments: As Grown - No indication of post-growth treatment. This Laboratory Grown Diamond was created by High Pressure High Temperature (HPHT) growth process. Type II