



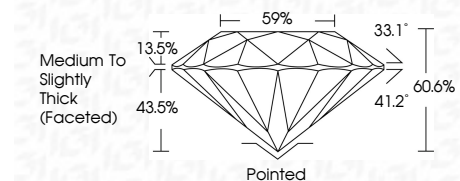
ELECTRONIC COPY

LG801692085 Report verification at igi.org



June 27, 2026 IGI Report Number LG801692085 Description LABORATORY GROWN DIAMOND Shape and Cutting Style ROUND BRILLIANT Measurements 7.47 - 7.53 X 4.55 MM

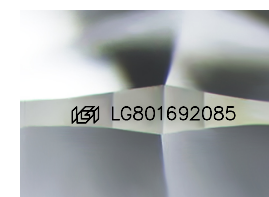
GRADING RESULTS Carat Weight 1.55 CARAT Color Grade D Clarity Grade FLAWLESS Cut Grade IDEAL



ADDITIONAL GRADING INFORMATION Polish EXCELLENT Symmetry EXCELLENT Fluorescence NONE Inscription(s) LG801692085 Comments: As Grown - No indication of post-growth treatment. This Laboratory Grown Diamond was created by High Pressure High Temperature (HPHT) growth process. Type II

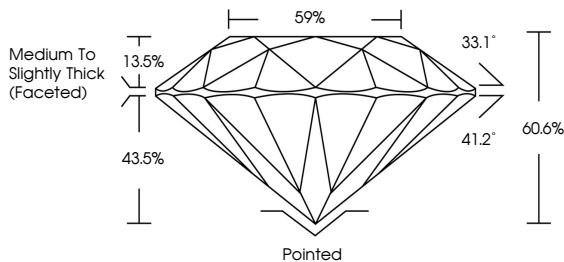


June 27, 2026 IGI Report No LG801692085 ROUND BRILLIANT 7.47 - 7.53 X 4.55 MM 1.55 CARAT D FLAWLESS IDEAL 60.6% 59% Medium To Slightly Thick (Faceted) Pointed EXCELLENT EXCELLENT NONE NONE LG801692085

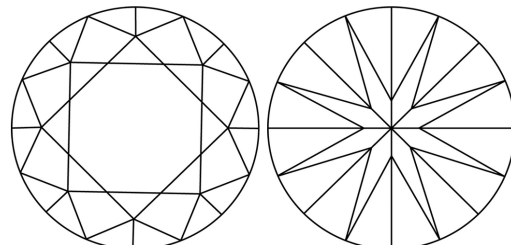


Sample Image Used

PROPORTIONS



CLARITY CHARACTERISTICS



KEY TO SYMBOLS Red symbols indicate internal characteristics. Green symbols indicate external characteristics.

COLOR

Color scale table with categories D, E, F, G, H, I, J, Faint, Very Light, Light.

CLARITY

Clarity scale table with categories FL, IF, VS 1-2, VS 1-2, SI 1-2, I 1-3, Flawless, Internally Flawless, Very Very Slightly Included, Very Slightly Included, Slightly Included, Included.

June 27, 2026 IGI Report Number LG801692085 Description LABORATORY GROWN DIAMOND Shape and Cutting Style ROUND BRILLIANT Measurements 7.47 - 7.53 X 4.55 MM

GRADING RESULTS Carat Weight 1.55 CARAT Color Grade D Clarity Grade FLAWLESS Cut Grade IDEAL

ADDITIONAL GRADING INFORMATION Polish EXCELLENT Symmetry EXCELLENT Fluorescence NONE Inscription(s) LG801692085

Comments: As Grown - No indication of post-growth treatment. This Laboratory Grown Diamond was created by High Pressure High Temperature (HPHT) growth process. Type II

