



ELECTRONIC COPY

LG801686577
Report verification at igi.org



June 18, 2026
IGI Report Number **LG801686577**
Description **LABORATORY GROWN DIAMOND**
Shape and Cutting Style **ANTIQUÉ CUSHION CUT**
Measurements **10.45 X 8.09 X 3.15 MM**
GRADING RESULTS
Carat Weight **2.17 CARATS**
Color Grade **FANCY PINKISH BROWN**
Clarity Grade **VS 1**

June 18, 2026
IGI Report Number **LG801686577**
Description **LABORATORY GROWN DIAMOND**
Shape and Cutting Style **ANTIQUÉ CUSHION CUT**
Measurements **10.45 X 8.09 X 3.15 MM**

GRADING RESULTS

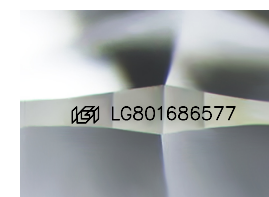
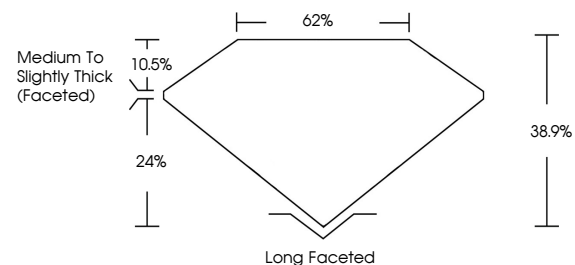
Carat Weight **2.17 CARATS**
Color Grade **FANCY PINKISH BROWN**
Clarity Grade **VS 1**

ADDITIONAL GRADING INFORMATION

Polish **EXCELLENT**
Symmetry **EXCELLENT**
Fluorescence **VERY SLIGHT**
Inscription(s) **IGI LG801686577**

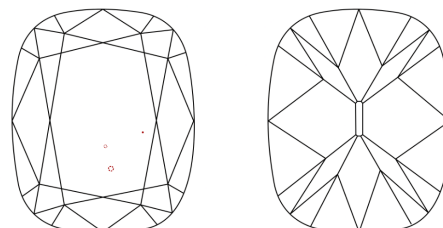
Comments: This Laboratory Grown Diamond was created by Chemical Vapor Deposition (CVD) growth process.
Indications of post-growth treatment.

PROPORTIONS



Sample Image Used

CLARITY CHARACTERISTICS



KEY TO SYMBOLS

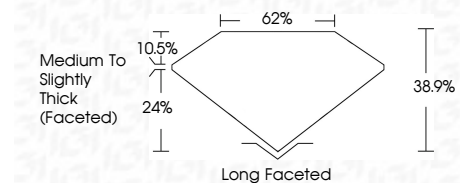
Red symbols indicate internal characteristics.
Green symbols indicate external characteristics.

COLOR

D E F G H I J Faint Very Light Light

CLARITY

FL	IF	VS ¹⁻²	VS ¹⁻²	SI ¹⁻²	I ¹⁻³
Flawless	Internally Flawless	Very Very Slightly Included	Very Slightly Included	Slightly Included	Included



ADDITIONAL GRADING INFORMATION

Polish **EXCELLENT**
Symmetry **EXCELLENT**
Fluorescence **VERY SLIGHT**
Inscription(s) **IGI LG801686577**
Comments: This Laboratory Grown Diamond was created by Chemical Vapor Deposition (CVD) growth process.
Indications of post-growth treatment.



June 18, 2026
IGI Report No. LG801686577
ANTIQUÉ CUSHION CUT
10.45 X 8.09 X 3.15 MM
Carat Weight **2.17 CARATS**
Color Grade **FANCY PINKISH BROWN**
Clarity Grade **VS 1**
Depth **38.9%**
Table **62%**
Girdle **Medium to Slightly Thick (Faceted)**
Culet **Long Faceted**
Polish **EXCELLENT**
Symmetry **EXCELLENT**
Fluorescence **VERY SLIGHT**
Inscription(s) **IGI LG801686577**
Comments: This Laboratory Grown Diamond was created by Chemical Vapor Deposition (CVD) growth process.
Indications of post-growth treatment.