



LABORATORY GROWN DIAMOND REPORT

June 10, 2026
 IGI Report Number **LG801685171**
 Description **LABORATORY GROWN DIAMOND**
 Shape and Cutting Style **ROUND BRILLIANT**
 Measurements **6.31 - 6.35 X 3.92 MM**

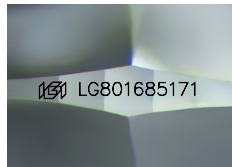
GRADING RESULTS

Carat Weight **0.98 CARAT**
 Color Grade **LIGHT PINK**
 Clarity Grade **VS 2**
 Cut Grade **IDEAL**

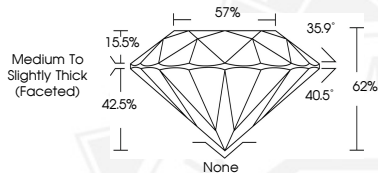
ADDITIONAL GRADING INFORMATION

Polish **EXCELLENT**
 Symmetry **EXCELLENT**
 Fluorescence **SLIGHT**
 Inscription(s) **IGI LG801685171**

Comments: This Laboratory Grown Diamond was created by High Pressure High Temperature (HPHT) growth process. Type II



Sample Image Used



June 10, 2026
 IGI Report Number **LG801685171**
 ROUND BRILLIANT
 LABORATORY GROWN DIAMOND
 6.31 - 6.35 X 3.92 MM
 Carat Weight **0.98 CARAT**
 Color Grade **LIGHT PINK**
 Clarity Grade **VS 2**
 Cut Grade **IDEAL**
 Polish **EXCELLENT**
 Symmetry **EXCELLENT**
 Fluorescence **SLIGHT**
 Inscription(s) **IGI LG801685171**
 Comments: This Laboratory Grown Diamond was created by High Pressure High Temperature (HPHT) growth process. Type II



June 10, 2026
 IGI Report Number **LG801685171**
 ROUND BRILLIANT
 LABORATORY GROWN DIAMOND
 6.31 - 6.35 X 3.92 MM
 Carat Weight **0.98 CARAT**
 Color Grade **LIGHT PINK**
 Clarity Grade **VS 2**
 Cut Grade **IDEAL**
 Polish **EXCELLENT**
 Symmetry **EXCELLENT**
 Fluorescence **SLIGHT**
 Inscription(s) **IGI LG801685171**
 Comments: This Laboratory Grown Diamond was created by High Pressure High Temperature (HPHT) growth process. Type II

THIS DOCUMENT WAS PRODUCED WITH THE FOLLOWING SECURITY MEASURES: SPECIAL DOCUMENT PAPER, INK SCREENS, WATERMARK, BACKGROUND DESIGNS, HOLOGRAM AND OTHER SECURITY FEATURES NOT LISTED AND DO EXCEED DOCUMENT SECURITY INDUSTRY GUIDELINES.