



LABORATORY GROWN DIAMOND REPORT

June 10, 2026
 IGI Report Number **LG801685170**
 Description **LABORATORY GROWN DIAMOND**
 Shape and Cutting Style **ROUND BRILLIANT**
 Measurements **6.13 - 6.15 X 3.83 MM**

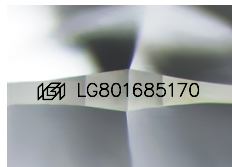
GRADING RESULTS

Carat Weight **0.91 CARAT**
 Color Grade **FANCY PINK**
 Clarity Grade **VS 1**
 Cut Grade **EXCELLENT**

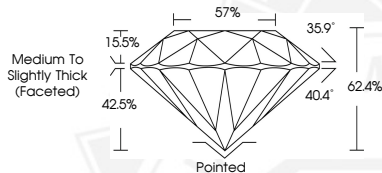
ADDITIONAL GRADING INFORMATION

Polish **EXCELLENT**
 Symmetry **EXCELLENT**
 Fluorescence **SLIGHT**
 Inscription(s) **IGI LG801685170**

Comments: This Laboratory Grown Diamond was created by High Pressure High Temperature (HPHT) growth process. Indications of post-growth treatment.



Sample Image Used



June 10, 2026
 IGI Report Number **LG801685170**
ROUND BRILLIANT
LABORATORY GROWN DIAMOND
6.13 - 6.15 X 3.83 MM
 Carat Weight **0.91 CARAT**
 Color Grade **FANCY PINK**
 Clarity Grade **VS 1**
 Cut Grade **EXCELLENT**
 Polish **EXCELLENT**
 Symmetry **EXCELLENT**
 Fluorescence **SLIGHT**
 Inscription(s) **IGI LG801685170**
 Comments: This Laboratory Grown Diamond was created by High Pressure High Temperature (HPHT) growth process. Indications of post-growth treatment.



June 10, 2026
 IGI Report Number **LG801685170**
ROUND BRILLIANT
LABORATORY GROWN DIAMOND
6.13 - 6.15 X 3.83 MM
 Carat Weight **0.91 CARAT**
 Color Grade **FANCY PINK**
 Clarity Grade **VS 1**
 Cut Grade **EXCELLENT**
 Polish **EXCELLENT**
 Symmetry **EXCELLENT**
 Fluorescence **SLIGHT**
 Inscription(s) **IGI LG801685170**
 Comments: This Laboratory Grown Diamond was created by High Pressure High Temperature (HPHT) growth process. Indications of post-growth treatment.

THIS DOCUMENT WAS PRODUCED WITH THE FOLLOWING SECURITY MEASURES: SPECIAL DOCUMENT PAPER, INK SCREENS, WATERMARK, BACKGROUND DESIGNS, HOLOGRAM AND OTHER SECURITY FEATURES NOT LISTED AND DO EXCEED DOCUMENT SECURITY INDUSTRY GUIDELINES.