



**ELECTRONIC COPY**

LG801685081  
Report verification at igi.org



June 10, 2026  
IGI Report Number **LG801685081**  
Description **LABORATORY GROWN DIAMOND**  
Shape and Cutting Style **CUSHION MODIFIED BRILLIANT**  
Measurements **8.70 X 8.21 X 5.30 MM**  
**GRADING RESULTS**  
Carat Weight **3.51 CARATS**  
Color Grade **FANCY VIVID BLUE**  
Clarity Grade **VS 2**

**LABORATORY GROWN DIAMOND REPORT**

June 10, 2026  
IGI Report Number **LG801685081**  
Description **LABORATORY GROWN DIAMOND**  
Shape and Cutting Style **CUSHION MODIFIED BRILLIANT**  
Measurements **8.70 X 8.21 X 5.30 MM**

**GRADING RESULTS**

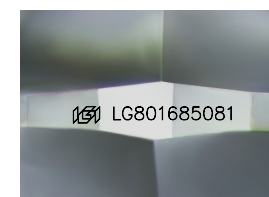
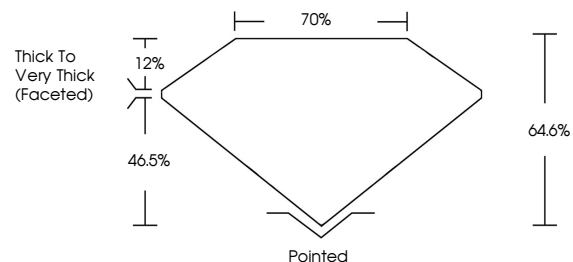
Carat Weight **3.51 CARATS**  
Color Grade **FANCY VIVID BLUE**  
Clarity Grade **VS 2**

**ADDITIONAL GRADING INFORMATION**

Polish **EXCELLENT**  
Symmetry **VERY GOOD**  
Fluorescence **NONE**  
Inscription(s) **IGI LG801685081**

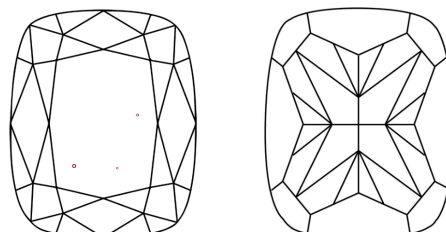
Comments: This Laboratory Grown Diamond was created by Chemical Vapor Deposition (CVD) growth process.  
Indications of post-growth treatment.

**PROPORTIONS**



Sample Image Used

**CLARITY CHARACTERISTICS**



**KEY TO SYMBOLS**

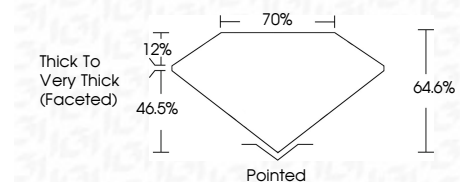
Red symbols indicate internal characteristics.  
Green symbols indicate external characteristics.

**COLOR**

D E F G H I J Faint Very Light Light

**CLARITY**

FL	IF	VS <sup>1-2</sup>	VS <sup>1-2</sup>	SI <sup>1-2</sup>	I <sup>1-3</sup>
Flawless	Internally Flawless	Very Very Slightly Included	Very Slightly Included	Slightly Included	Included



**ADDITIONAL GRADING INFORMATION**

Polish **EXCELLENT**  
Symmetry **VERY GOOD**  
Fluorescence **NONE**  
Inscription(s) **IGI LG801685081**  
Comments: This Laboratory Grown Diamond was created by Chemical Vapor Deposition (CVD) growth process.  
Indications of post-growth treatment.



June 10, 2026  
IGI Report No LG801685081  
**CUSHION MODIFIED BRILLIANT**  
8.70 X 8.21 X 5.30 MM  
3.51 CARATS  
FANCY VIVID BLUE  
VS 2  
64.6%  
70%  
Thick to Very Thick (Faceted)  
Pointed  
EXCELLENT  
VERY GOOD  
NONE  
IGI LG801685081  
Comments: This Laboratory Grown Diamond was created by Chemical Vapor Deposition (CVD) growth process.  
Indications of post-growth treatment.