



**ELECTRONIC COPY**

LG801684952  
Report verification at [igi.org](http://igi.org)



June 9, 2026  
IGI Report Number **LG801684952**  
Description **LABORATORY GROWN DIAMOND**  
Shape and Cutting Style **CUSHION MODIFIED BRILLIANT**  
Measurements **7.60 X 5.96 X 4.30 MM**  
**GRADING RESULTS**  
Carat Weight **1.60 CARAT**  
Color Grade **FANCY VIVID GREEN**  
Clarity Grade **VS 1**

June 9, 2026  
IGI Report Number **LG801684952**  
Description **LABORATORY GROWN DIAMOND**  
Shape and Cutting Style **CUSHION MODIFIED BRILLIANT**  
Measurements **7.60 X 5.96 X 4.30 MM**

**GRADING RESULTS**

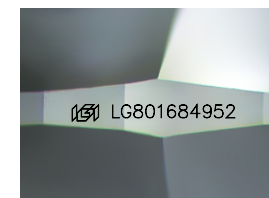
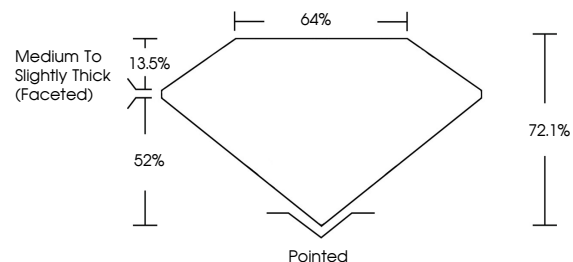
Carat Weight **1.60 CARAT**  
Color Grade **FANCY VIVID GREEN**  
Clarity Grade **VS 1**

**ADDITIONAL GRADING INFORMATION**

Polish **EXCELLENT**  
Symmetry **EXCELLENT**  
Fluorescence **VERY SLIGHT**  
Inscription(s) **IGI LG801684952**

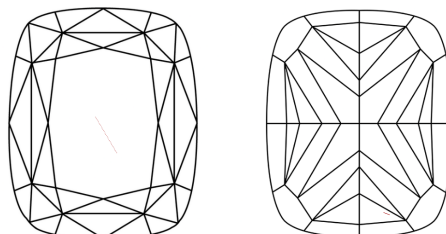
Comments: This Laboratory Grown Diamond was created by Chemical Vapor Deposition (CVD) growth process.  
Indications of post-growth treatment.

**PROPORTIONS**



Sample Image Used

**CLARITY CHARACTERISTICS**



**KEY TO SYMBOLS**

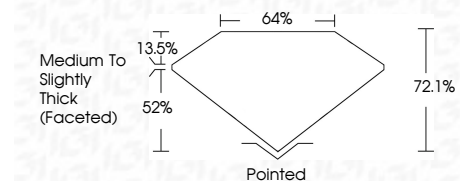
Red symbols indicate internal characteristics.  
Green symbols indicate external characteristics.

**COLOR**

D E F G H I J Faint Very Light Light

**CLARITY**

FL	IF	VS <sup>1-2</sup>	VS <sup>1-2</sup>	SI <sup>1-2</sup>	I <sup>1-3</sup>
Flawless	Internally Flawless	Very Very Slightly Included	Very Slightly Included	Slightly Included	Included



**ADDITIONAL GRADING INFORMATION**

Polish **EXCELLENT**  
Symmetry **EXCELLENT**  
Fluorescence **VERY SLIGHT**  
Inscription(s) **IGI LG801684952**  
Comments: This Laboratory Grown Diamond was created by Chemical Vapor Deposition (CVD) growth process.  
Indications of post-growth treatment.



June 9, 2026  
IGI Report No LG801684952  
**CUSHION MODIFIED BRILLIANT**  
7.60 X 5.96 X 4.30 MM  
1.60 CARAT  
FANCY VIVID GREEN  
VS 1  
72.1%  
64%  
Medium to Slightly Thick (Faceted)  
Pointed  
EXCELLENT  
EXCELLENT  
VERY SLIGHT  
IGI LG801684952  
Comments: This Laboratory Grown Diamond was created by Chemical Vapor Deposition (CVD) growth process.  
Indications of post-growth treatment.