



ELECTRONIC COPY

LG801684489
Report verification at igi.org



June 8, 2026
IGI Report Number LG801684489
Description LABORATORY GROWN DIAMOND
Shape and Cutting Style SQUARE CUSHION MODIFIED BRILLIANT
Measurements 5.69 X 5.62 X 3.75 MM
GRADING RESULTS
Carat Weight 1.03 CARAT
Color Grade FANCY INTENSE BLUE
Clarity Grade VVS 2

LABORATORY GROWN DIAMOND REPORT

June 8, 2026
IGI Report Number LG801684489
Description LABORATORY GROWN DIAMOND
Shape and Cutting Style SQUARE CUSHION MODIFIED BRILLIANT
Measurements 5.69 X 5.62 X 3.75 MM

GRADING RESULTS

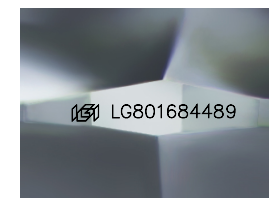
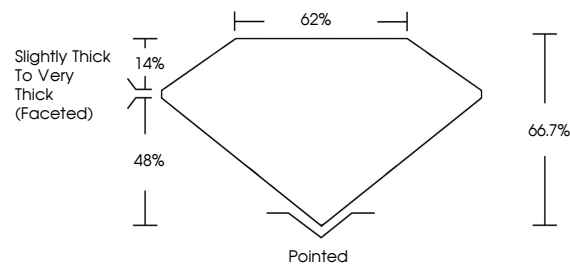
Carat Weight 1.03 CARAT
Color Grade FANCY INTENSE BLUE
Clarity Grade VVS 2

ADDITIONAL GRADING INFORMATION

Polish VERY GOOD
Symmetry EXCELLENT
Fluorescence NONE
Inscription(s) LG801684489

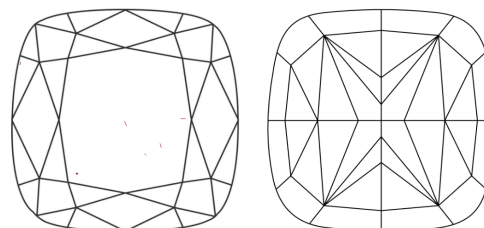
Comments: This Laboratory Grown Diamond was created by Chemical Vapor Deposition (CVD) growth process.
Indications of post-growth treatment.

PROPORTIONS



Sample Image Used

CLARITY CHARACTERISTICS



KEY TO SYMBOLS

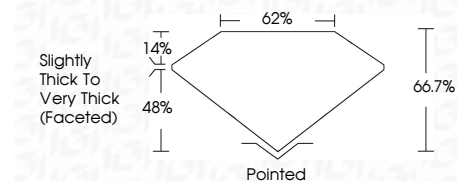
Red symbols indicate internal characteristics.
Green symbols indicate external characteristics.

COLOR

D E F G H I J Faint Very Light Light

CLARITY

FL IF VS 1-2 VS 1-2 SI 1-2 I 1-3
Flawless Internally Flawless Very Very Slightly Included Very Slightly Included Slightly Included Included



ADDITIONAL GRADING INFORMATION

Polish VERY GOOD
Symmetry EXCELLENT
Fluorescence NONE
Inscription(s) LG801684489
Comments: This Laboratory Grown Diamond was created by Chemical Vapor Deposition (CVD) growth process.
Indications of post-growth treatment.



June 8, 2026
IGI Report No LG801684489
SQUARE CUSHION MODIFIED BRILLIANT
1.03 CARAT
5.69 X 5.62 X 3.75 MM
FANCY INTENSE BLUE
VVS 2
66.7%
62%
Slightly Thick To Very Thick (Faceted)
Pointed
VERY GOOD
EXCELLENT
NONE
IGI LG801684489
Comments: This Laboratory Grown Diamond was created by Chemical Vapor Deposition (CVD) growth process.
Indications of post-growth treatment.