



ELECTRONIC COPY

LG801683764
Report verification at igi.org



June 5, 2026
IGI Report Number **LG801683764**
Description **LABORATORY GROWN DIAMOND**
Shape and Cutting Style **SQUARE CUSHION MODIFIED BRILLIANT**
Measurements **9.41 X 9.14 X 5.62 MM**
GRADING RESULTS
Carat Weight **4.03 CARATS**
Color Grade **FANCY VIVID BLUE**
Clarity Grade **VS 2**

LABORATORY GROWN DIAMOND REPORT

June 5, 2026
IGI Report Number **LG801683764**
Description **LABORATORY GROWN DIAMOND**
Shape and Cutting Style **SQUARE CUSHION MODIFIED BRILLIANT**
Measurements **9.41 X 9.14 X 5.62 MM**

GRADING RESULTS

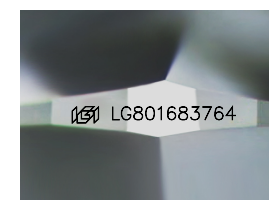
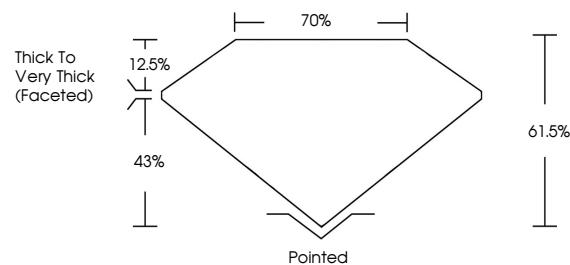
Carat Weight **4.03 CARATS**
Color Grade **FANCY VIVID BLUE**
Clarity Grade **VS 2**

ADDITIONAL GRADING INFORMATION

Polish **EXCELLENT**
Symmetry **EXCELLENT**
Fluorescence **NONE**
Inscription(s) **IGI LG801683764**

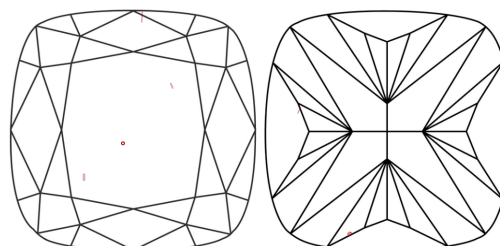
Comments: This Laboratory Grown Diamond was created by Chemical Vapor Deposition (CVD) growth process.
Indications of post-growth treatment.

PROPORTIONS



Sample Image Used

CLARITY CHARACTERISTICS



KEY TO SYMBOLS

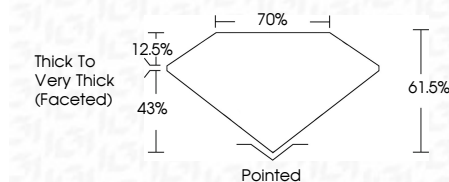
Red symbols indicate internal characteristics.
Green symbols indicate external characteristics.

COLOR

D E F G H I J Faint Very Light Light

CLARITY

FL	IF	VS ¹⁻²	VS ¹⁻²	SI ¹⁻²	I ¹⁻³
Flawless	Internally Flawless	Very Very Slightly Included	Very Slightly Included	Slightly Included	Included



ADDITIONAL GRADING INFORMATION

Polish **EXCELLENT**
Symmetry **EXCELLENT**
Fluorescence **NONE**
Inscription(s) **IGI LG801683764**
Comments: This Laboratory Grown Diamond was created by Chemical Vapor Deposition (CVD) growth process.
Indications of post-growth treatment.



June 5, 2026
IGI Report No LG801683764
SQUARE CUSHION MODIFIED BRILLIANT
9.41 X 9.14 X 5.62 MM
4.03 CARATS
FANCY VIVID BLUE
VS 2
61.05%
70%
Thick to Very Thick (Faceted)
Pointed
EXCELLENT
EXCELLENT
NONE
IGI LG801683764
Comments: This Laboratory Grown Diamond was created by Chemical Vapor Deposition (CVD) growth process.
Indications of post-growth treatment.