



ELECTRONIC COPY

LG801682957
Report verification at igi.org



June 1, 2026
IGI Report Number **LG801682957**
Description **LABORATORY GROWN DIAMOND**
Shape and Cutting Style **CUT CORNERED
RECTANGULAR MODIFIED
BRILLIANT**
Measurements **11.72 X 8.25 X 5.45 MM**
GRADING RESULTS
Carat Weight **5.00 CARATS**
Color Grade **FANCY INTENSE PINK**
Clarity Grade **VS 1**

LABORATORY GROWN DIAMOND REPORT

June 1, 2026
IGI Report Number **LG801682957**
Description **LABORATORY GROWN DIAMOND**
Shape and Cutting Style **CUT CORNERED RECTANGULAR
MODIFIED BRILLIANT**
Measurements **11.72 X 8.25 X 5.45 MM**

GRADING RESULTS

Carat Weight **5.00 CARATS**
Color Grade **FANCY INTENSE PINK**
Clarity Grade **VS 1**

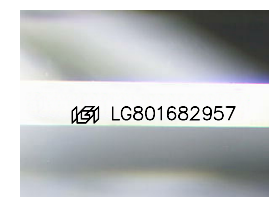
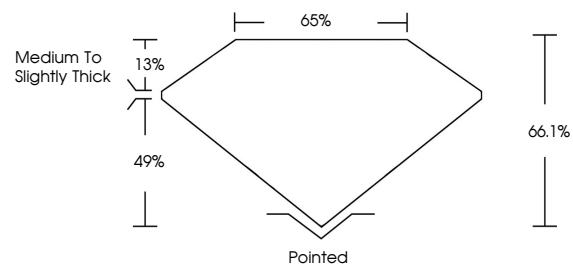
ADDITIONAL GRADING INFORMATION

Polish **EXCELLENT**
Symmetry **EXCELLENT**
Fluorescence **SLIGHT**
Inscription(s) **IGI LG801682957**

Comments: This Laboratory Grown Diamond was created by Chemical Vapor Deposition (CVD) growth process.
Indications of post-growth treatment.

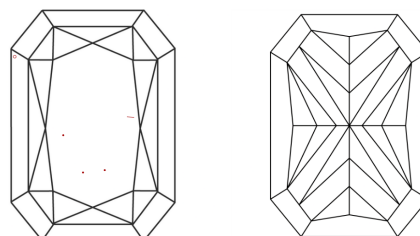
Secondary color: Brown

PROPORTIONS



Sample Image Used

CLARITY CHARACTERISTICS



KEY TO SYMBOLS

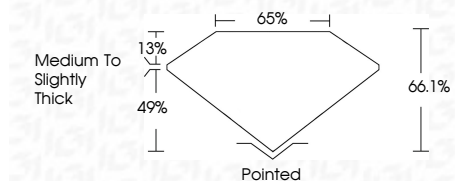
Red symbols indicate internal characteristics.
Green symbols indicate external characteristics.

COLOR

D E F G H I J Faint Very Light Light

CLARITY

FL	IF	VS ¹⁻²	VS ¹⁻²	SI ¹⁻²	I ¹⁻³
Flawless	Internally Flawless	Very Very Slightly Included	Very Slightly Included	Slightly Included	Included



ADDITIONAL GRADING INFORMATION

Polish **EXCELLENT**
Symmetry **EXCELLENT**
Fluorescence **SLIGHT**
Inscription(s) **IGI LG801682957**
Comments: This Laboratory Grown Diamond was created by Chemical Vapor Deposition (CVD) growth process.
Indications of post-growth treatment.
Secondary color: Brown



June 1, 2026
IGI Report No LG801682957
CUT CORNERED RECT. MODIFIED BRILLIANT
11.72 X 8.25 X 5.45 MM
5.00 CARATS
FANCY INTENSE PINK
VS 1
66.1%
65%
Medium to Slightly Thick
Pointed
EXCELLENT
EXCELLENT
SLIGHT
IGI LG801682957
Comments: This Laboratory Grown Diamond was created by Chemical Vapor Deposition (CVD) growth process.
Indications of post-growth treatment.
Secondary color: Brown