



ELECTRONIC COPY

LG801682626
Report verification at igi.org



May 29, 2026
IGI Report Number **LG801682626**
Description **LABORATORY GROWN DIAMOND**
Shape and Cutting Style **SQUARE CUSHION MODIFIED BRILLIANT**
Measurements **10.18 X 9.78 X 6.52 MM**
GRADING RESULTS
Carat Weight **6.20 CARATS**
Color Grade **FANCY VIVID YELLOW**
Clarity Grade **VS 2**

May 29, 2026
IGI Report Number **LG801682626**
Description **LABORATORY GROWN DIAMOND**
Shape and Cutting Style **SQUARE CUSHION MODIFIED BRILLIANT**
Measurements **10.18 X 9.78 X 6.52 MM**

GRADING RESULTS

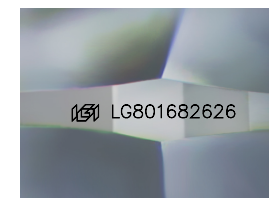
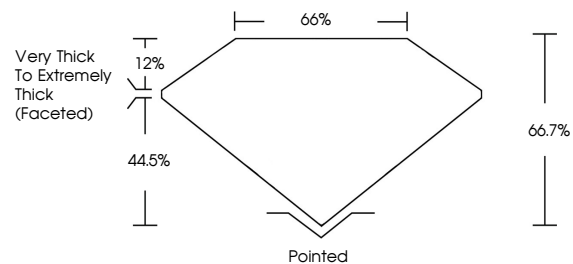
Carat Weight **6.20 CARATS**
Color Grade **FANCY VIVID YELLOW**
Clarity Grade **VS 2**

ADDITIONAL GRADING INFORMATION

Polish **EXCELLENT**
Symmetry **EXCELLENT**
Fluorescence **NONE**
Inscription(s) **IGI LG801682626**

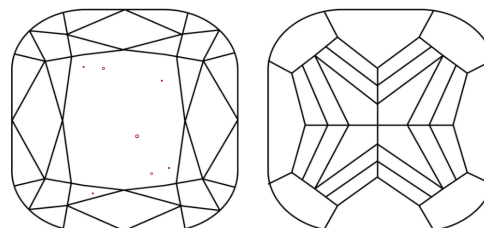
Comments: This Laboratory Grown Diamond was created by Chemical Vapor Deposition (CVD) growth process.

PROPORTIONS



Sample Image Used

CLARITY CHARACTERISTICS



KEY TO SYMBOLS

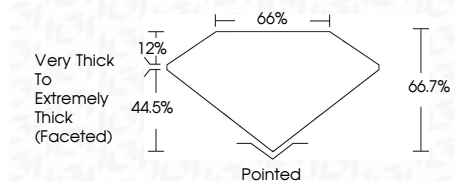
Red symbols indicate internal characteristics.
Green symbols indicate external characteristics.

COLOR

D E F G H I J Faint Very Light Light

CLARITY

FL	IF	VS ¹⁻²	VS ¹⁻²	SI ¹⁻²	I ¹⁻³
Flawless	Internally Flawless	Very Very Slightly Included	Very Slightly Included	Slightly Included	Included



ADDITIONAL GRADING INFORMATION

Polish **EXCELLENT**
Symmetry **EXCELLENT**
Fluorescence **NONE**
Inscription(s) **IGI LG801682626**
Comments: This Laboratory Grown Diamond was created by Chemical Vapor Deposition (CVD) growth process.



May 29, 2026
IGI Report No. **LG801682626**
SQUARE CUSHION MODIFIED BRILLIANT
10.18 X 9.78 X 6.52 MM
6.20 CARATS
Carat Weight
Color Grade **FANCY VIVID YELLOW**
Clarity Grade **VS 2**
Depth **66.7%**
Table **66%**
Girdle **Very Thick to Extremely Thick (Faceted)**
Culet **Pointed**
Polish **EXCELLENT**
Symmetry **EXCELLENT**
Fluorescence **NONE**
Inscription(s) **IGI LG801682626**
Comments: This Laboratory Grown Diamond was created by Chemical Vapor Deposition (CVD) growth process.