



**ELECTRONIC COPY**

LG801682581  
Report verification at igi.org



May 29, 2026

IGI Report Number **LG801682581**

Description **LABORATORY GROWN DIAMOND**

Shape and Cutting Style **ROUND MODIFIED BRILLIANT**

Measurements **10.67 - 10.71 X 2.94 MM**

**GRADING RESULTS**

Carat Weight **2.96 CARATS**

Color Grade **FANCY INTENSE GREEN**

Clarity Grade **VS 1**

May 29, 2026

IGI Report Number **LG801682581**

Description **LABORATORY GROWN DIAMOND**

Shape and Cutting Style **ROUND MODIFIED BRILLIANT**

Measurements **10.67 - 10.71 X 2.94 MM**

**GRADING RESULTS**

Carat Weight **2.96 CARATS**

Color Grade **FANCY INTENSE GREEN**

Clarity Grade **VS 1**

**ADDITIONAL GRADING INFORMATION**

Polish **VERY GOOD**

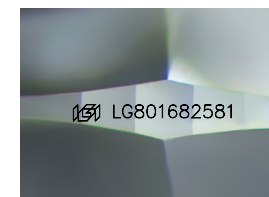
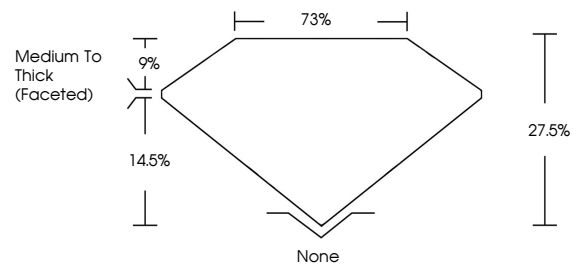
Symmetry **EXCELLENT**

Fluorescence **NONE**

Inscription(s) **IGI LG801682581**

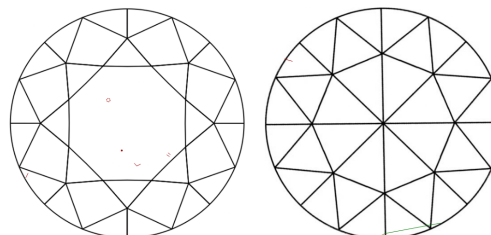
Comments: This Laboratory Grown Diamond was created by Chemical Vapor Deposition (CVD) growth process. Indications of post-growth treatment.

**PROPORTIONS**



Sample Image Used

**CLARITY CHARACTERISTICS**



**KEY TO SYMBOLS**

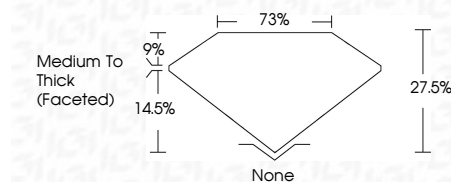
Red symbols indicate internal characteristics.  
Green symbols indicate external characteristics.

**COLOR**

D E F G H I J Faint Very Light Light

**CLARITY**

FL	IF	VS <sup>1-2</sup>	VS <sup>1-2</sup>	SI <sup>1-2</sup>	I <sup>1-3</sup>
Flawless	Internally Flawless	Very Very Slightly Included	Very Slightly Included	Slightly Included	Included



**ADDITIONAL GRADING INFORMATION**

Polish **VERY GOOD**

Symmetry **EXCELLENT**

Fluorescence **NONE**

Inscription(s) **IGI LG801682581**

Comments: This Laboratory Grown Diamond was created by Chemical Vapor Deposition (CVD) growth process. Indications of post-growth treatment.



**IGI**



May 29, 2026  
IGI Report No LG801682581  
**ROUND MODIFIED BRILLIANT**  
2.96 CARATS  
FANCY INTENSE GREEN  
VS 1  
27.05%  
Medium To Thick (Faceted)  
None  
VERY GOOD  
EXCELLENT  
NONE  
IGI LG801682581

Comments: This Laboratory Grown Diamond was created by Chemical Vapor Deposition (CVD) growth process. Indications of post-growth treatment.