



ELECTRONIC COPY

LG801682416
Report verification at igi.org



May 27, 2026
IGI Report Number **LG801682416**
Description **LABORATORY GROWN DIAMOND**
Shape and Cutting Style **PEAR MIXED CUT**
Measurements **15.07 X 5.10 X 2.78 MM**
GRADING RESULTS
Carat Weight **1.43 CARAT**
Color Grade **FANCY PINKISH BROWN**
Clarity Grade **VS 2**

May 27, 2026
IGI Report Number **LG801682416**
Description **LABORATORY GROWN DIAMOND**
Shape and Cutting Style **PEAR MIXED CUT**
Measurements **15.07 X 5.10 X 2.78 MM**

GRADING RESULTS

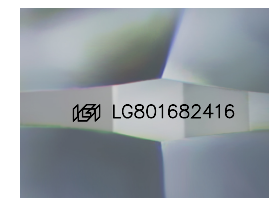
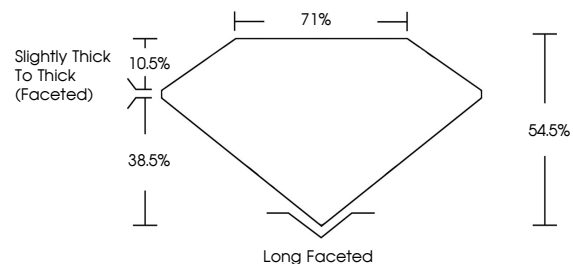
Carat Weight **1.43 CARAT**
Color Grade **FANCY PINKISH BROWN**
Clarity Grade **VS 2**

ADDITIONAL GRADING INFORMATION

Polish **EXCELLENT**
Symmetry **EXCELLENT**
Fluorescence **NONE**
Inscription(s) **IGI LG801682416**

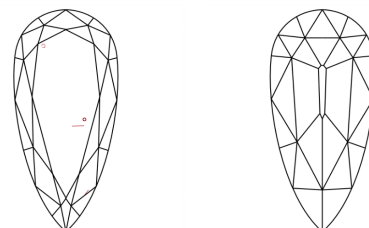
Comments: This Laboratory Grown Diamond was created by Chemical Vapor Deposition (CVD) growth process.
Indications of post-growth treatment.

PROPORTIONS



Sample Image Used

CLARITY CHARACTERISTICS



KEY TO SYMBOLS

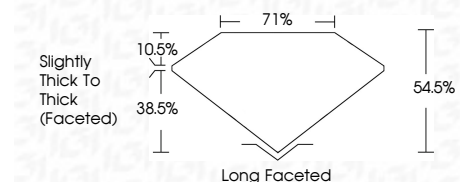
Red symbols indicate internal characteristics.
Green symbols indicate external characteristics.

COLOR

D E F G H I J Faint Very Light Light

CLARITY

FL	IF	VS ¹⁻²	VS ¹⁻²	SI ¹⁻²	I ¹⁻³
Flawless	Internally Flawless	Very Very Slightly Included	Very Slightly Included	Slightly Included	Included



ADDITIONAL GRADING INFORMATION

Polish **EXCELLENT**
Symmetry **EXCELLENT**
Fluorescence **NONE**
Inscription(s) **IGI LG801682416**
Comments: This Laboratory Grown Diamond was created by Chemical Vapor Deposition (CVD) growth process.
Indications of post-growth treatment.



May 27, 2026
IGI Report No LG801682416
PEAR MIXED CUT
15.07 X 5.10 X 2.78 MM
1.43 CARAT
FANCY PINKISH BROWN
VS 2
64.05%
71%
Slightly Thick To Thick (Faceted)
Long Faceted
EXCELLENT
EXCELLENT
NONE
IGI LG801682416
Comments: This Laboratory Grown Diamond was created by Chemical Vapor Deposition (CVD) growth process.
Indications of post-growth treatment.