



**INTERNATIONAL  
GEMOLOGICAL  
INSTITUTE**

**LABORATORY GROWN DIAMOND REPORT**

May 19, 2026  
 IGI Report Number **LG801681647**  
 Description **LABORATORY GROWN DIAMOND**  
 Shape and Cutting Style **ROUND BRILLIANT**  
 Measurements **4.99 - 5.02 X 3.07 MM**

**GRADING RESULTS**

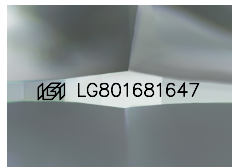
Carat Weight **0.46 CARAT**  
 Color Grade **D**  
 Clarity Grade **VS 1**  
 Cut Grade **VERY GOOD**

**ADDITIONAL GRADING INFORMATION**

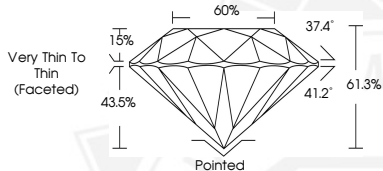
Polish **EXCELLENT**  
 Symmetry **VERY GOOD**  
 Fluorescence **NONE**  
 Inscription(s) **IGI LG801681647**

Comments: As Grown - No indication of post-growth treatment. This Laboratory Grown Diamond was created by High Pressure High Temperature (HPHT) growth process. Type II

**ELECTRONIC COPY**



Sample Image Used



May 19, 2026

IGI Report Number **LG801681647**  
**ROUND BRILLIANT**  
**LABORATORY GROWN DIAMOND**  
**4.99 - 5.02 X 3.07 MM**

Carat Weight **0.46 CARAT**  
 Color Grade **D**  
 Clarity Grade **VS 1**  
 Cut Grade **VERY GOOD**  
 Polish **EXCELLENT**  
 Symmetry **VERY GOOD**  
 Fluorescence **NONE**  
 Inscription(s) **IGI LG801681647**

Comments: As Grown - No indication of post-growth treatment. This Laboratory Grown Diamond was created by High Pressure High Temperature (HPHT) growth process. Type II



May 19, 2026

IGI Report Number **LG801681647**  
**ROUND BRILLIANT**  
**LABORATORY GROWN DIAMOND**  
**4.99 - 5.02 X 3.07 MM**

Carat Weight **0.46 CARAT**  
 Color Grade **D**  
 Clarity Grade **VS 1**  
 Cut Grade **VERY GOOD**  
 Polish **EXCELLENT**  
 Symmetry **VERY GOOD**  
 Fluorescence **NONE**  
 Inscription(s) **IGI LG801681647**

Comments: As Grown - No indication of post-growth treatment. This Laboratory Grown Diamond was created by High Pressure High Temperature (HPHT) growth process. Type II



THIS DOCUMENT WAS PRODUCED WITH THE FOLLOWING SECURITY MEASURES: SPECIAL DOCUMENT PAPER, INK SCREENS, WATERMARK, BACKGROUND DESIGNS, HOLOGRAM AND OTHER SECURITY FEATURES NOT LISTED AND DO EXCEED DOCUMENT SECURITY INDUSTRY GUIDELINES.

For terms & conditions and to verify this report, please visit [www.igi.org](http://www.igi.org)