



ELECTRONIC COPY

LG801679433
Report verification at igi.org



May 14, 2026

IGI Report Number **LG801679433**

Description **LABORATORY GROWN DIAMOND**

Shape and Cutting Style **PRINCESS CUT**

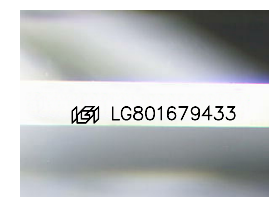
Measurements **7.08 X 6.99 X 5.00 MM**

GRADING RESULTS

Carat Weight **2.17 CARATS**

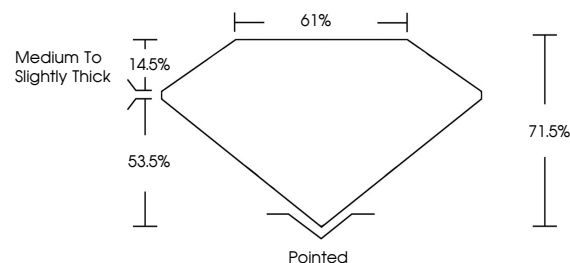
Color Grade **D**

Clarity Grade **VVS 2**

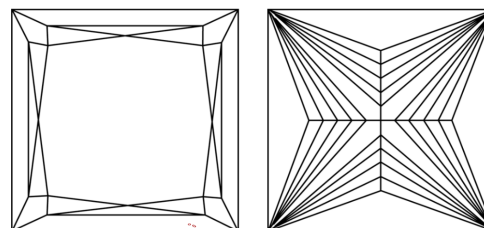


Sample Image Used

PROPORTIONS



CLARITY CHARACTERISTICS



KEY TO SYMBOLS

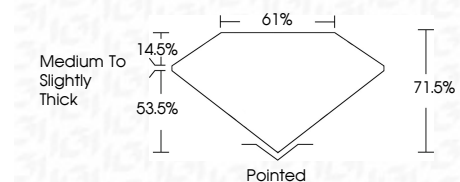
Red symbols indicate internal characteristics.
Green symbols indicate external characteristics.

COLOR

D E F G H I J Faint Very Light Light

CLARITY

FL	IF	VVS ¹⁻²	VS ¹⁻²	SI ¹⁻²	I ¹⁻³
Flawless	Internally Flawless	Very Very Slightly Included	Very Slightly Included	Slightly Included	Included



ADDITIONAL GRADING INFORMATION

Polish **EXCELLENT**

Symmetry **EXCELLENT**

Fluorescence **NONE**

Inscription(s) **IGI LG801679433**

Comments: As Grown - No indication of post-growth treatment.

This Laboratory Grown Diamond was created by High Pressure High Temperature (HPHT) growth process. Type II



IGI



May 14, 2026
IGI Report No LG801679433
PRINCESS CUT
7.08 X 6.99 X 5.00 MM
2.17 CARATS
D
VS 2
71.05%
61%
Medium to Slightly Thick
Pointed
EXCELLENT
EXCELLENT
NONE
IGI LG801679433

Comments: As Grown - No indication of post-growth treatment.
This Laboratory Grown Diamond was created by High Pressure High Temperature (HPHT) growth process. Type II