



ELECTRONIC COPY

LG801675579
Report verification at igi.org



May 29, 2026
IGI Report Number **LG801675579**
Description **LABORATORY GROWN DIAMOND**
Shape and Cutting Style **CUSHION MODIFIED BRILLIANT**
Measurements **10.97 X 7.68 X 5.43 MM**
GRADING RESULTS
Carat Weight **4.04 CARATS**
Color Grade **FANCY VIVID PINK**
Clarity Grade **VVS 2**

LABORATORY GROWN DIAMOND REPORT

May 29, 2026
IGI Report Number **LG801675579**
Description **LABORATORY GROWN DIAMOND**
Shape and Cutting Style **CUSHION MODIFIED BRILLIANT**
Measurements **10.97 X 7.68 X 5.43 MM**

GRADING RESULTS

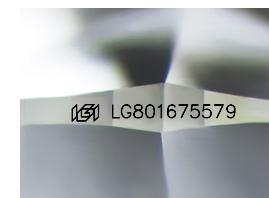
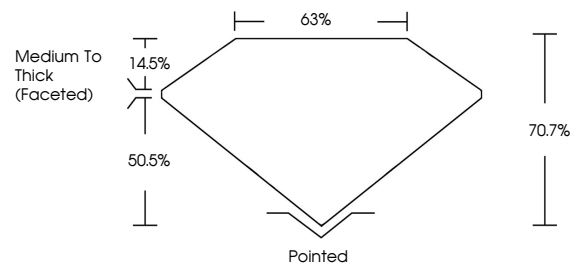
Carat Weight **4.04 CARATS**
Color Grade **FANCY VIVID PINK**
Clarity Grade **VVS 2**

ADDITIONAL GRADING INFORMATION

Polish **EXCELLENT**
Symmetry **EXCELLENT**
Fluorescence **SLIGHT**
Inscription(s) **IGI LG801675579**

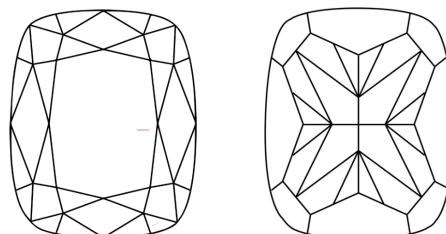
Comments: This Laboratory Grown Diamond was created by Chemical Vapor Deposition (CVD) growth process.
Indications of post-growth treatment.

PROPORTIONS



Sample Image Used

CLARITY CHARACTERISTICS



KEY TO SYMBOLS

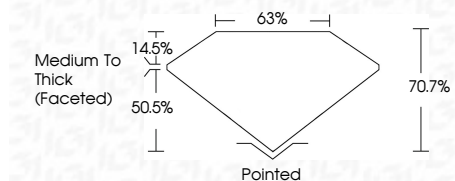
Red symbols indicate internal characteristics.
Green symbols indicate external characteristics.

COLOR

D E F G H I J Faint Very Light Light

CLARITY

FL	IF	VVS ¹⁻²	VS ¹⁻²	SI ¹⁻²	I ¹⁻³
Flawless	Internally Flawless	Very Very Slightly Included	Very Slightly Included	Slightly Included	Included



ADDITIONAL GRADING INFORMATION

Polish **EXCELLENT**
Symmetry **EXCELLENT**
Fluorescence **SLIGHT**
Inscription(s) **IGI LG801675579**
Comments: This Laboratory Grown Diamond was created by Chemical Vapor Deposition (CVD) growth process.
Indications of post-growth treatment.



May 29, 2026
IGI Report No LG801675579
CUSHION MODIFIED BRILLIANT
10.97 X 7.68 X 5.43 MM
4.04 CARATS
FANCY VIVID PINK
VVS 2
70.7%
63%
Medium To Thick (Faceted)
Pointed
EXCELLENT
EXCELLENT
SLIGHT
IGI LG801675579
Comments: This Laboratory Grown Diamond was created by Chemical Vapor Deposition (CVD) growth process.
Indications of post-growth treatment.