



ELECTRONIC COPY

LG801667493
Report verification at igi.org



June 22, 2026
IGI Report Number LG801667493
Description LABORATORY GROWN DIAMOND
Shape and Cutting Style CUSHION MODIFIED BRILLIANT
Measurements 10.26 X 7.63 X 5.07 MM
GRADING RESULTS
Carat Weight 3.05 CARATS
Color Grade E
Clarity Grade VVS 2

LABORATORY GROWN DIAMOND REPORT

June 22, 2026
IGI Report Number LG801667493
Description LABORATORY GROWN DIAMOND
Shape and Cutting Style CUSHION MODIFIED BRILLIANT
Measurements 10.26 X 7.63 X 5.07 MM

GRADING RESULTS

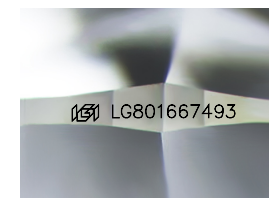
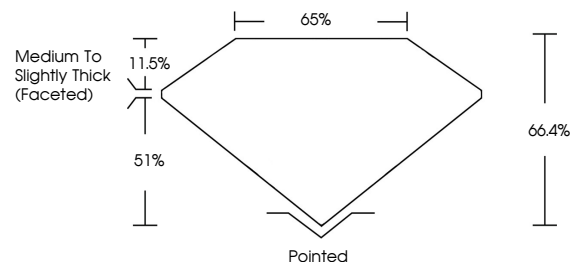
Carat Weight 3.05 CARATS
Color Grade E
Clarity Grade VVS 2

ADDITIONAL GRADING INFORMATION

Polish EXCELLENT
Symmetry EXCELLENT
Fluorescence NONE
Inscription(s) LG801667493

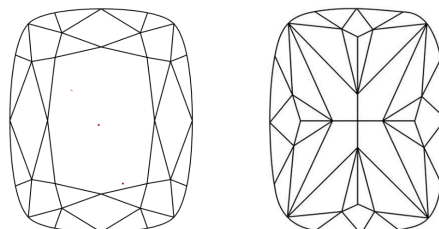
Comments: This Laboratory Grown Diamond was created by Chemical Vapor Deposition (CVD) growth process. Type IIa

PROPORTIONS



Sample Image Used

CLARITY CHARACTERISTICS



KEY TO SYMBOLS

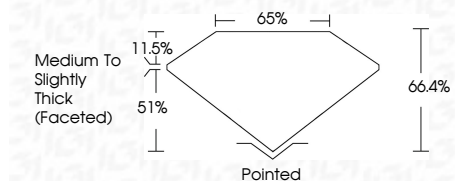
Red symbols indicate internal characteristics.
Green symbols indicate external characteristics.

COLOR

D E F G H I J Faint Very Light Light

CLARITY

FL IF VVS 1-2 VS 1-2 SI 1-2 I 1-3
Flawless Internally Flawless Very Very Slightly Included Very Slightly Included Slightly Included Included



ADDITIONAL GRADING INFORMATION

Polish EXCELLENT
Symmetry EXCELLENT
Fluorescence NONE
Inscription(s) LG801667493
Comments: This Laboratory Grown Diamond was created by Chemical Vapor Deposition (CVD) growth process. Type IIa



June 22, 2026
IGI Report No LG801667493
CUSHION MODIFIED BRILLIANT
10.26 X 7.63 X 5.07 MM
3.05 CARATS E
Carat Weight
Color Grade VVS 2
Depth 66.4%
Table 65%
Girdle Medium to Slightly Thick (Faceted)
Culet Pointed
Polish EXCELLENT
Symmetry EXCELLENT
Fluorescence NONE
Inscription(s) LG801667493
Comments: This Laboratory Grown Diamond was created by Chemical Vapor Deposition (CVD) growth process. Type IIa