



ELECTRONIC COPY

LG801662932
Report verification at igi.org



June 5, 2026
IGI Report Number **LG801662932**
Description **LABORATORY GROWN DIAMOND**
Shape and Cutting Style **CUT CORNERED
RECTANGULAR MODIFIED
BRILLIANT**
Measurements **9.03 X 6.58 X 4.51 MM**
GRADING RESULTS
Carat Weight **2.55 CARATS**
Color Grade **FANCY VIVID PINK**
Clarity Grade **VS 2**

LABORATORY GROWN DIAMOND REPORT

June 5, 2026
IGI Report Number **LG801662932**
Description **LABORATORY GROWN DIAMOND**
Shape and Cutting Style **CUT CORNERED RECTANGULAR
MODIFIED BRILLIANT**
Measurements **9.03 X 6.58 X 4.51 MM**

GRADING RESULTS

Carat Weight **2.55 CARATS**
Color Grade **FANCY VIVID PINK**
Clarity Grade **VS 2**

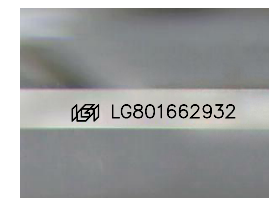
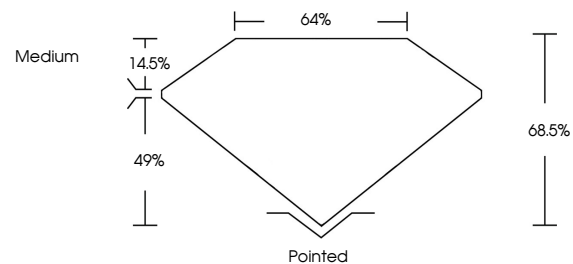
ADDITIONAL GRADING INFORMATION

Polish **EXCELLENT**
Symmetry **EXCELLENT**
Fluorescence **SLIGHT**
Inscription(s) **IGI LG801662932**

Comments: This Laboratory Grown Diamond was created by Chemical Vapor Deposition (CVD) growth process.
Indications of post-growth treatment.

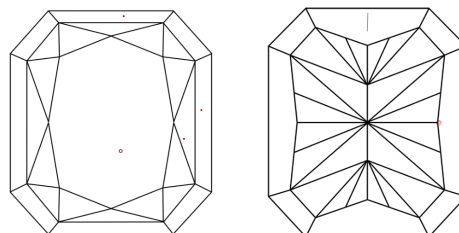
Secondary color: Orange

PROPORTIONS



Sample Image Used

CLARITY CHARACTERISTICS



KEY TO SYMBOLS

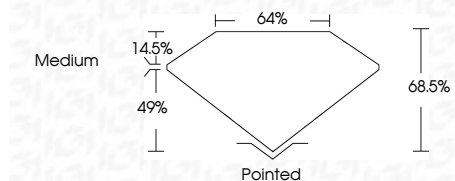
Red symbols indicate internal characteristics.
Green symbols indicate external characteristics.

COLOR

D E F G H I J Faint Very Light Light

CLARITY

FL	IF	VS ¹⁻²	VS ¹⁻²	SI ¹⁻²	I ¹⁻³
Flawless	Internally Flawless	Very Very Slightly Included	Very Slightly Included	Slightly Included	Included



ADDITIONAL GRADING INFORMATION

Polish **EXCELLENT**
Symmetry **EXCELLENT**
Fluorescence **SLIGHT**
Inscription(s) **IGI LG801662932**
Comments: This Laboratory Grown Diamond was created by Chemical Vapor Deposition (CVD) growth process.
Indications of post-growth treatment.
Secondary color: Orange



June 5, 2026
IGI Report No LG801662932
CUT CORNERED RECT. MODIFIED BRILLIANT
9.03 X 6.58 X 4.51 MM
2.55 CARATS
FANCY VIVID PINK
VS 2
68.5%
49%
Medium
Pointed
EXCELLENT
EXCELLENT
SLIGHT
IGI LG801662932
Comments: This Laboratory Grown Diamond was created by Chemical Vapor Deposition (CVD) growth process.
Indications of post-growth treatment.
Secondary color: Orange