



ELECTRONIC COPY

LG801660673
Report verification at igi.org



June 1, 2026
IGI Report Number **LG801660673**
Description **LABORATORY GROWN DIAMOND**
Shape and Cutting Style **EMERALD CUT**
Measurements **18.24 X 13.02 X 8.08 MM**
GRADING RESULTS
Carat Weight **20.05 CARATS**
Color Grade **FANCY VIVID PINK**
Clarity Grade **VS 1**

June 1, 2026
IGI Report Number **LG801660673**
Description **LABORATORY GROWN DIAMOND**
Shape and Cutting Style **EMERALD CUT**
Measurements **18.24 X 13.02 X 8.08 MM**

GRADING RESULTS

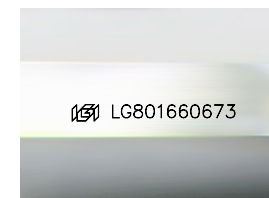
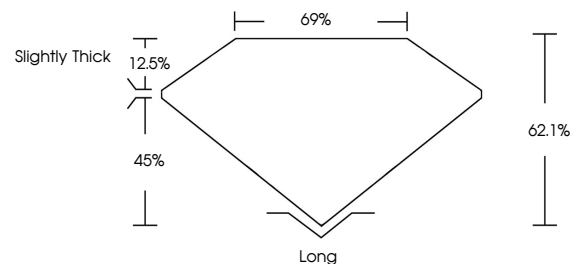
Carat Weight **20.05 CARATS**
Color Grade **FANCY VIVID PINK**
Clarity Grade **VS 1**

ADDITIONAL GRADING INFORMATION

Polish **EXCELLENT**
Symmetry **EXCELLENT**
Fluorescence **STRONG**
Inscription(s) **IGI LG801660673**

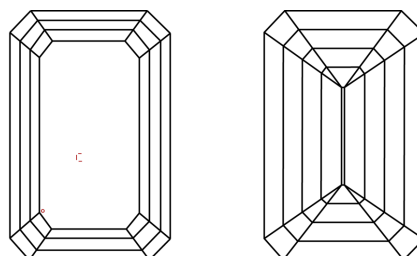
Comments: This Laboratory Grown Diamond was created by Chemical Vapor Deposition (CVD) growth process.
Indications of post-growth treatment.

PROPORTIONS



Sample Image Used

CLARITY CHARACTERISTICS



KEY TO SYMBOLS

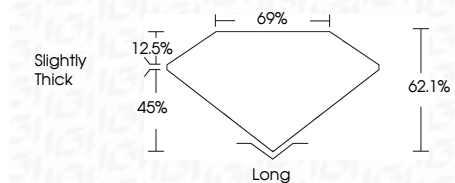
Red symbols indicate internal characteristics.
Green symbols indicate external characteristics.

COLOR

D E F G H I J Faint Very Light Light

CLARITY

FL	IF	VS ¹⁻²	VS ¹⁻²	SI ¹⁻²	I ¹⁻³
Flawless	Internally Flawless	Very Very Slightly Included	Very Slightly Included	Slightly Included	Included



ADDITIONAL GRADING INFORMATION

Polish **EXCELLENT**
Symmetry **EXCELLENT**
Fluorescence **STRONG**
Inscription(s) **IGI LG801660673**
Comments: This Laboratory Grown Diamond was created by Chemical Vapor Deposition (CVD) growth process.
Indications of post-growth treatment.



IGI



June 1, 2026
IGI Report No **LG801660673**
EMERALD CUT
18.24 X 13.02 X 8.08 MM
Carat Weight **20.05 CARATS**
Color Grade **FANCY VIVID PINK**
Clarity Grade **VS 1**
Table **69%**
Girdle **Slightly Thick**
Culet **Long**
Polish **EXCELLENT**
Symmetry **EXCELLENT**
Fluorescence **STRONG**
Inscription(s) **IGI LG801660673**
Comments: This Laboratory Grown Diamond was created by Chemical Vapor Deposition (CVD) growth process.
Indications of post-growth treatment.