



ELECTRONIC COPY

LG801660577
Report verification at igi.org



May 16, 2026
IGI Report Number **LG801660577**
Description **LABORATORY GROWN DIAMOND**
Shape and Cutting Style **ROUND BRILLIANT**
Measurements **10.26 - 10.29 X 6.30 MM**
GRADING RESULTS
Carat Weight **4.06 CARATS**
Color Grade **F**
Clarity Grade **VVS 2**
Cut Grade **IDEAL**

May 16, 2026
IGI Report Number **LG801660577**
Description **LABORATORY GROWN DIAMOND**
Shape and Cutting Style **ROUND BRILLIANT**
Measurements **10.26 - 10.29 X 6.30 MM**

GRADING RESULTS

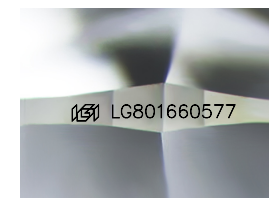
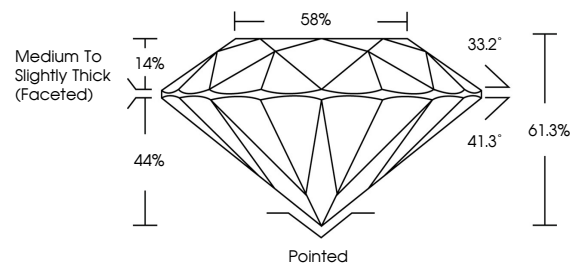
Carat Weight **4.06 CARATS**
Color Grade **F**
Clarity Grade **VVS 2**
Cut Grade **IDEAL**

ADDITIONAL GRADING INFORMATION

Polish **EXCELLENT**
Symmetry **EXCELLENT**
Fluorescence **NONE**
Inscription(s) **IGI LG801660577**

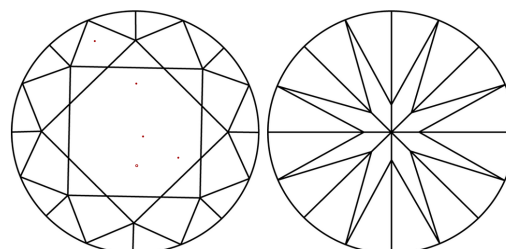
Comments: This Laboratory Grown Diamond was created by Chemical Vapor Deposition (CVD) growth process.
Type IIa

PROPORTIONS



Sample Image Used

CLARITY CHARACTERISTICS



KEY TO SYMBOLS

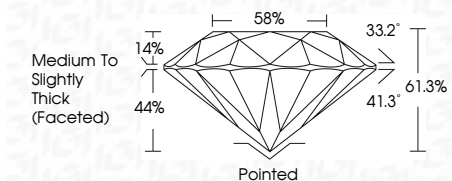
Red symbols indicate internal characteristics.
Green symbols indicate external characteristics.

COLOR

D E F G H I J Faint Very Light Light

CLARITY

FL	IF	VVS ¹⁻²	VS ¹⁻²	SI ¹⁻²	I ¹⁻³
Flawless	Internally Flawless	Very Very Slightly Included	Very Slightly Included	Slightly Included	Included



ADDITIONAL GRADING INFORMATION

Polish **EXCELLENT**
Symmetry **EXCELLENT**
Fluorescence **NONE**
Inscription(s) **IGI LG801660577**
Comments: This Laboratory Grown Diamond was created by Chemical Vapor Deposition (CVD) growth process.
Type IIa



IGI



May 16, 2026
IGI Report No LG801660577
ROUND BRILLIANT
10.26 - 10.29 X 6.30 MM
4.06 CARATS
Color Grade **F**
Clarity Grade **VVS 2**
Cut Grade **IDEAL**
Depth **61.3%**
Table **58%**
Girdle **Medium To Slightly Thick (Faceted)**
Culet **Pointed**
Polish **EXCELLENT**
Symmetry **EXCELLENT**
Fluorescence **NONE**
Inscription(s) **IGI LG801660577**
Comments: This Laboratory Grown Diamond was created by Chemical Vapor Deposition (CVD) growth process.
Type IIa