



ELECTRONIC COPY

LG801660561
Report verification at igi.org



May 20, 2026

IGI Report Number **LG801660561**

Description **LABORATORY GROWN DIAMOND**

Shape and Cutting Style **ROUND BRILLIANT**

Measurements **9.78 - 9.81 X 6.05 MM**

GRADING RESULTS

Carat Weight **3.56 CARATS**

Color Grade **D**

Clarity Grade **VVS 2**

Cut Grade **IDEAL**

May 20, 2026

IGI Report Number **LG801660561**

Description **LABORATORY GROWN DIAMOND**

Shape and Cutting Style **ROUND BRILLIANT**

Measurements **9.78 - 9.81 X 6.05 MM**

GRADING RESULTS

Carat Weight **3.56 CARATS**

Color Grade **D**

Clarity Grade **VVS 2**

Cut Grade **IDEAL**

ADDITIONAL GRADING INFORMATION

Polish **EXCELLENT**

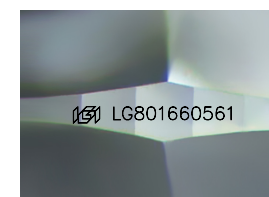
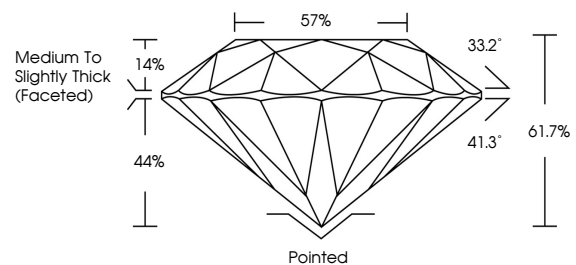
Symmetry **EXCELLENT**

Fluorescence **NONE**

Inscription(s) **IGI LG801660561**

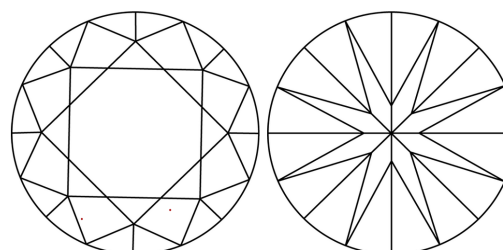
Comments: This Laboratory Grown Diamond was created by Chemical Vapor Deposition (CVD) growth process.
Type IIa

PROPORTIONS



Sample Image Used

CLARITY CHARACTERISTICS



KEY TO SYMBOLS

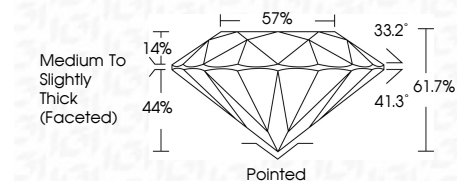
Red symbols indicate internal characteristics.
Green symbols indicate external characteristics.

COLOR

D E F G H I J Faint Very Light Light

CLARITY

FL	IF	VVS ¹⁻²	VS ¹⁻²	SI ¹⁻²	I ¹⁻³
Flawless	Internally Flawless	Very Very Slightly Included	Very Slightly Included	Slightly Included	Included



ADDITIONAL GRADING INFORMATION

Polish **EXCELLENT**

Symmetry **EXCELLENT**

Fluorescence **NONE**

Inscription(s) **IGI LG801660561**

Comments: This Laboratory Grown Diamond was created by Chemical Vapor Deposition (CVD) growth process.
Type IIa



IGI



May 20, 2026
IGI Report No LG801660561
ROUND BRILLIANT

3.56 CARATS
Carat Weight
Color Grade D
Clarity Grade VVS 2
Depth 61.7%
Table 14%
Girdle 57%
Medium To Slightly Thick (Faceted)

Culet Pointed
Polish EXCELLENT
Symmetry EXCELLENT
Fluorescence NONE
Inscriptions(s) IGI LG801660561

Comments: This Laboratory Grown Diamond was created by Chemical Vapor Deposition (CVD) growth process.
Type IIa