



**INTERNATIONAL  
GEMOLOGICAL  
INSTITUTE**

**ELECTRONIC COPY**



May 14, 2026

**IGI Report Number** LG801660010  
**ROUND BRILLIANT**  
**LABORATORY GROWN DIAMOND**  
**5.17 - 5.21 X 3.11 MM**

**Carat Weight** 0.51 CARAT  
**Color Grade** D  
**Clarity Grade** VVS 2  
**Cut Grade** IDEAL  
**Polish** EXCELLENT  
**Symmetry** EXCELLENT  
**Fluorescence** NONE  
**Inscription(s)** IGI LG801660010

Comments: This Laboratory Grown Diamond was created by Chemical Vapor Deposition (CVD) growth process. Type IIa

**LABORATORY GROWN DIAMOND REPORT**

May 14, 2026  
IGI Report Number **LG801660010**  
Description **LABORATORY GROWN DIAMOND**  
Shape and Cutting Style **ROUND BRILLIANT**  
Measurements **5.17 - 5.21 X 3.11 MM**

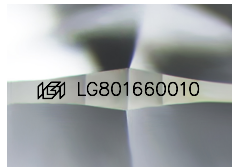
**GRADING RESULTS**

**Carat Weight** 0.51 CARAT  
**Color Grade** D  
**Clarity Grade** VVS 2  
**Cut Grade** IDEAL

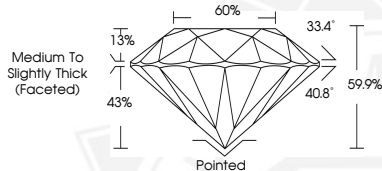
**ADDITIONAL GRADING INFORMATION**

**Polish** EXCELLENT  
**Symmetry** EXCELLENT  
**Fluorescence** NONE  
**Inscription(s)** IGI LG801660010

Comments: This Laboratory Grown Diamond was created by Chemical Vapor Deposition (CVD) growth process. Type IIa



Sample Image Used



May 14, 2026

**IGI Report Number** LG801660010  
**ROUND BRILLIANT**  
**LABORATORY GROWN DIAMOND**  
**5.17 - 5.21 X 3.11 MM**

**Carat Weight** 0.51 CARAT  
**Color Grade** D  
**Clarity Grade** VVS 2  
**Cut Grade** IDEAL  
**Polish** EXCELLENT  
**Symmetry** EXCELLENT  
**Fluorescence** NONE  
**Inscription(s)** IGI LG801660010

Comments: This Laboratory Grown Diamond was created by Chemical Vapor Deposition (CVD) growth process. Type IIa



THIS DOCUMENT WAS PRODUCED WITH THE FOLLOWING SECURITY MEASURES: SPECIAL DOCUMENT PAPER, INK SCREENS, WATERMARK, BACKGROUND DESIGNS, HOLOGRAM AND OTHER SECURITY FEATURES NOT LISTED AND DO EXCEED DOCUMENT SECURITY INDUSTRY GUIDELINES.

For terms & conditions and to verify this report, please visit [www.igi.org](http://www.igi.org)