



ELECTRONIC COPY

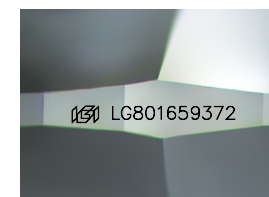
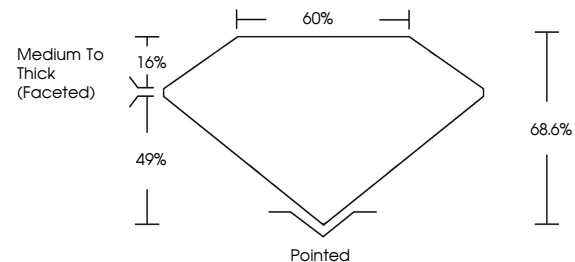
LG801659372
Report verification at igi.org



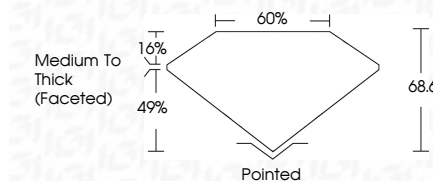
May 23, 2026
IGI Report Number **LG801659372**
Description **LABORATORY GROWN DIAMOND**
Shape and Cutting Style **SQUARE CUSHION MODIFIED BRILLIANT**
Measurements **8.09 X 8.07 X 5.54 MM**
GRADING RESULTS
Carat Weight **3.05 CARATS**
Color Grade **D**
Clarity Grade **INTERNALLY FLAWLESS**

May 23, 2026
IGI Report Number **LG801659372**
Description **LABORATORY GROWN DIAMOND**
Shape and Cutting Style **SQUARE CUSHION MODIFIED BRILLIANT**
Measurements **8.09 X 8.07 X 5.54 MM**
GRADING RESULTS
Carat Weight **3.05 CARATS**
Color Grade **D**
Clarity Grade **INTERNALLY FLAWLESS**

PROPORTIONS



Sample Image Used



ADDITIONAL GRADING INFORMATION

Polish **EXCELLENT**
Symmetry **EXCELLENT**
Fluorescence **NONE**
Inscription(s) **IGI LG801659372**

Comments: As Grown - No indication of post-growth treatment.
This Laboratory Grown Diamond was created by High Pressure High Temperature (HPHT) growth process.
Type II

ADDITIONAL GRADING INFORMATION

Polish **EXCELLENT**
Symmetry **EXCELLENT**
Fluorescence **NONE**
Inscription(s) **IGI LG801659372**
Comments: As Grown - No indication of post-growth treatment.
This Laboratory Grown Diamond was created by High Pressure High Temperature (HPHT) growth process.
Type II

COLOR

D E F G H I J Faint Very Light Light

CLARITY

FL	IF	VS ¹⁻²	VS ¹⁻²	SI ¹⁻²	I ¹⁻³
Flawless	Internally Flawless	Very Very Slightly Included	Very Slightly Included	Slightly Included	Included



IGI



May 23, 2026
IGI Report No LG801659372
SQUARE CUSHION MODIFIED BRILLIANT
8.09 X 8.07 X 5.54 MM
Carat Weight **3.05 CARATS**
Color Grade **D**
Clarity Grade **IF**
Depth **68.6%**
Table **Medium To Thick (Faceted)**
Girdle **Pointed**
Culet **EXCELLENT**
Polish **EXCELLENT**
Symmetry **EXCELLENT**
Fluorescence **NONE**
Inscription(s) **IGI LG801659372**

Comments: As Grown - No indication of post-growth treatment.
This Laboratory Grown Diamond was created by High Pressure High Temperature (HPHT) growth process.
Type II