



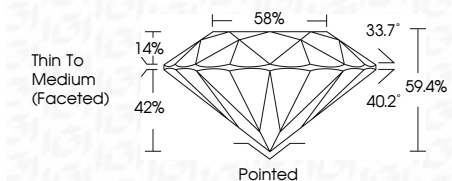
ELECTRONIC COPY

LG801659240 Report verification at igi.org



May 16, 2026 IGI Report Number LG801659240 Description LABORATORY GROWN DIAMOND Shape and Cutting Style ROUND BRILLIANT Measurements 6.57 - 6.61 X 3.92 MM

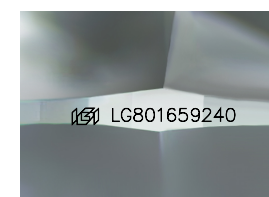
GRADING RESULTS Carat Weight 1.02 CARAT Color Grade D Clarity Grade VS 1 Cut Grade IDEAL



ADDITIONAL GRADING INFORMATION Polish EXCELLENT Symmetry EXCELLENT Fluorescence NONE Inscription(s) LG801659240 Comments: As Grown - No indication of post-growth treatment. This Laboratory Grown Diamond was created by High Pressure High Temperature (HPHT) growth process. Type II



May 16, 2026 IGI Report No LG801659240 ROUND BRILLIANT 6.57 - 6.61 X 3.92 MM 1.02 CARAT D VS 1 IDEAL 59.4% 58% 42% 14% Thin To Medium (Faceted) Pointed EXCELLENT EXCELLENT NONE LG801659240



Sample Image Used

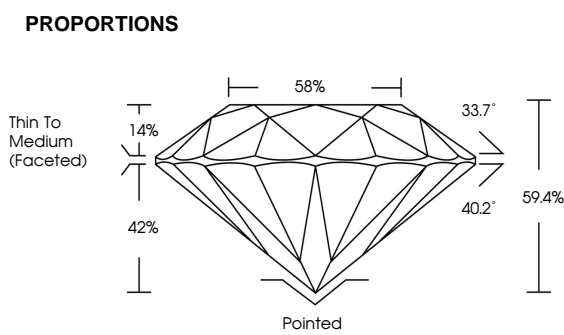


Table with 10 columns for color grades: D, E, F, G, H, I, J, Faint, Very Light, Light

Table with 6 columns for clarity grades: FL, IF, VS 1-2, VS 1-2, SI 1-2, I 1-3



May 16, 2026 IGI Report Number LG801659240 Description LABORATORY GROWN DIAMOND Shape and Cutting Style ROUND BRILLIANT Measurements 6.57 - 6.61 X 3.92 MM GRADING RESULTS Carat Weight 1.02 CARAT Color Grade D Clarity Grade VS 1 Cut Grade IDEAL ADDITIONAL GRADING INFORMATION Polish EXCELLENT Symmetry EXCELLENT Fluorescence NONE Inscription(s) LG801659240 Comments: As Grown - No indication of post-growth treatment. This Laboratory Grown Diamond was created by High Pressure High Temperature (HPHT) growth process. Type II