



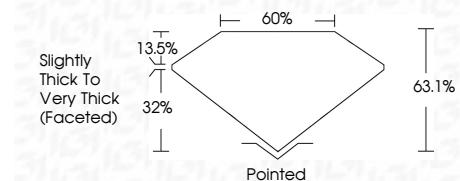
ELECTRONIC COPY

LG801659049
Report verification at igi.org



May 18, 2026
IGI Report Number **LG801659049**
Description **LABORATORY GROWN DIAMOND**
Shape and Cutting Style **OVAL MODIFIED BRILLIANT**
Measurements **9.44 X 6.55 X 4.13 MM**

GRADING RESULTS
Carat Weight **2.03 CARATS**
Color Grade **FANCY VIVID PINK**
Clarity Grade **VVS 2**



ADDITIONAL GRADING INFORMATION
Polish **EXCELLENT**
Symmetry **EXCELLENT**
Fluorescence **SLIGHT**
Inscription(s) **IGI LG801659049**
Comments: This Laboratory Grown Diamond was created by Chemical Vapor Deposition (CVD) growth process. Indications of post-growth treatment.

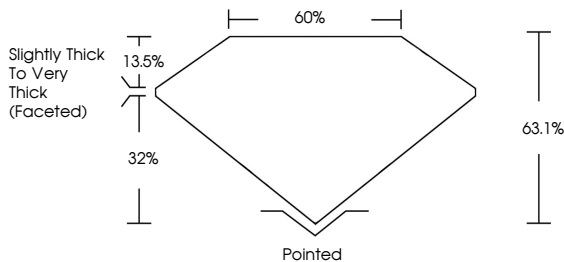


May 18, 2026
IGI Report No **LG801659049**
OVAL MODIFIED BRILLIANT
9.44 X 6.55 X 4.13 MM
2.03 CARATS
FANCY VIVID PINK
VVS 2
63.1%
32%
Slightly Thick To Very Thick (Faceted)
Pointed
EXCELLENT
EXCELLENT
SLIGHT
IGI LG801659049
Comments: This Laboratory Grown Diamond was created by Chemical Vapor Deposition (CVD) growth process. Indications of post-growth treatment.

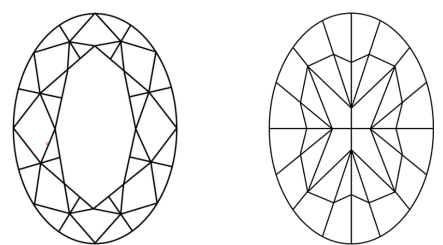
May 18, 2026
IGI Report Number **LG801659049**
Description **LABORATORY GROWN DIAMOND**
Shape and Cutting Style **OVAL MODIFIED BRILLIANT**
Measurements **9.44 X 6.55 X 4.13 MM**
GRADING RESULTS
Carat Weight **2.03 CARATS**
Color Grade **FANCY VIVID PINK**
Clarity Grade **VVS 2**
ADDITIONAL GRADING INFORMATION
Polish **EXCELLENT**
Symmetry **EXCELLENT**
Fluorescence **SLIGHT**
Inscription(s) **IGI LG801659049**

Comments: This Laboratory Grown Diamond was created by Chemical Vapor Deposition (CVD) growth process. Indications of post-growth treatment.

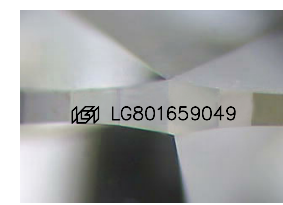
PROPORTIONS



CLARITY CHARACTERISTICS



KEY TO SYMBOLS
Red symbols indicate internal characteristics.
Green symbols indicate external characteristics.



Sample Image Used

COLOR

D	E	F	G	H	I	J	Faint	Very Light	Light
---	---	---	---	---	---	---	-------	------------	-------

CLARITY

FL	IF	VVS ¹⁻²	VS ¹⁻²	SI ¹⁻²	I ¹⁻³
Flawless	Internally Flawless	Very Very Slightly Included	Very Slightly Included	Slightly Included	Included

