



**ELECTRONIC COPY**

LG801653260  
Report verification at igi.org



May 19, 2026  
IGI Report Number **LG801653260**  
Description **LABORATORY GROWN DIAMOND**  
Shape and Cutting Style **ROUND BRILLIANT**  
Measurements **7.60 - 7.65 X 4.76 MM**  
**GRADING RESULTS**  
Carat Weight **1.71 CARAT**  
Color Grade **FANCY LIGHT BROWN**  
Clarity Grade **VS 1**  
Cut Grade **IDEAL**

May 19, 2026  
IGI Report Number **LG801653260**  
Description **LABORATORY GROWN DIAMOND**  
Shape and Cutting Style **ROUND BRILLIANT**  
Measurements **7.60 - 7.65 X 4.76 MM**

**GRADING RESULTS**

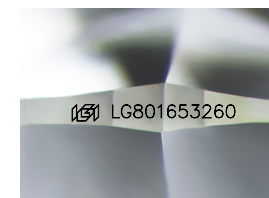
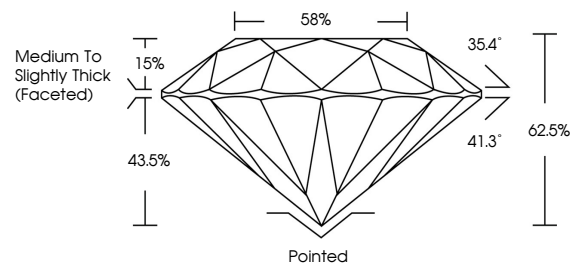
Carat Weight **1.71 CARAT**  
Color Grade **FANCY LIGHT BROWN**  
Clarity Grade **VS 1**  
Cut Grade **IDEAL**

**ADDITIONAL GRADING INFORMATION**

Polish **EXCELLENT**  
Symmetry **EXCELLENT**  
Fluorescence **VERY SLIGHT**  
Inscription(s) **LG801653260**

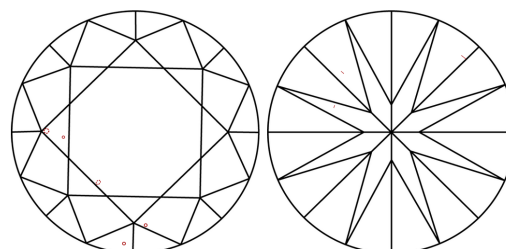
Comments: This Laboratory Grown Diamond was created by Chemical Vapor Deposition (CVD) growth process.  
Indications of post-growth treatment.

**PROPORTIONS**



Sample Image Used

**CLARITY CHARACTERISTICS**



**KEY TO SYMBOLS**

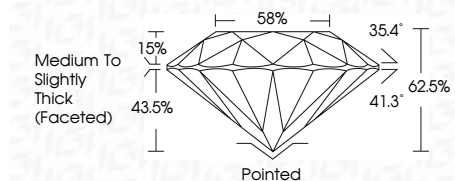
Red symbols indicate internal characteristics.  
Green symbols indicate external characteristics.

**COLOR**

D E F G H I J Faint Very Light Light

**CLARITY**

FL	IF	VS <sup>1-2</sup>	VS <sup>1-2</sup>	SI <sup>1-2</sup>	I <sup>1-3</sup>
Flawless	Internally Flawless	Very Very Slightly Included	Very Slightly Included	Slightly Included	Included



**ADDITIONAL GRADING INFORMATION**

Polish **EXCELLENT**  
Symmetry **EXCELLENT**  
Fluorescence **VERY SLIGHT**  
Inscription(s) **LG801653260**  
Comments: This Laboratory Grown Diamond was created by Chemical Vapor Deposition (CVD) growth process.  
Indications of post-growth treatment.



May 19, 2026  
IGI Report No LG801653260  
**ROUND BRILLIANT**  
7.60 - 7.65 X 4.76 MM  
1.71 CARAT  
FANCY LIGHT BROWN  
VS 1  
IDEAL  
62.5%  
58%  
Medium To Slightly Thick (Faceted)  
Pointed  
EXCELLENT  
EXCELLENT  
VERY SLIGHT  
IGI LG801653260

Comments: This Laboratory Grown Diamond was created by Chemical Vapor Deposition (CVD) growth process.  
Indications of post-growth treatment.