



May 23, 2026

IGI Report Number LG801635452
ROUND BRILLIANT
LABORATORY GROWN DIAMOND
5.85 - 5.87 X 3.57 MM

Carat Weight 0.75 CARAT
Color Grade FANCY YELLOW
Clarity Grade VVS 1
Cut Grade IDEAL
Polish EXCELLENT
Symmetry EXCELLENT
Fluorescence VERY SLIGHT
Inscription(s) IGI LG801635452

Comments: This Laboratory Grown Diamond was created by High Pressure High Temperature (HPHT) growth process. Indications of post-growth treatment.
Secondary color: Brown

LABORATORY GROWN DIAMOND REPORT

May 23, 2026
IGI Report Number **LG801635452**
Description **LABORATORY GROWN DIAMOND**
Shape and Cutting Style **ROUND BRILLIANT**
Measurements **5.85 - 5.87 X 3.57 MM**

GRADING RESULTS

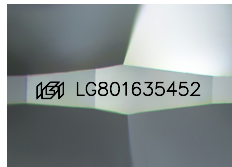
Carat Weight 0.75 CARAT
Color Grade FANCY YELLOW
Clarity Grade VVS 1
Cut Grade IDEAL

ADDITIONAL GRADING INFORMATION

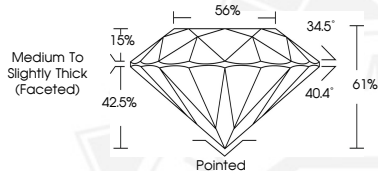
Polish EXCELLENT
Symmetry EXCELLENT
Fluorescence VERY SLIGHT
Inscription(s) IGI LG801635452

Comments: This Laboratory Grown Diamond was created by High Pressure High Temperature (HPHT) growth process.
Indications of post-growth treatment.

Secondary color: Brown



Sample Image Used



May 23, 2026

IGI Report Number LG801635452
ROUND BRILLIANT
LABORATORY GROWN DIAMOND
5.85 - 5.87 X 3.57 MM

Carat Weight 0.75 CARAT
Color Grade FANCY YELLOW
Clarity Grade VVS 1
Cut Grade IDEAL
Polish EXCELLENT
Symmetry EXCELLENT
Fluorescence VERY SLIGHT
Inscription(s) IGI LG801635452

Comments: This Laboratory Grown Diamond was created by High Pressure High Temperature (HPHT) growth process. Indications of post-growth treatment.
Secondary color: Brown

THIS DOCUMENT WAS PRODUCED WITH THE FOLLOWING SECURITY MEASURES: SPECIAL DOCUMENT PAPER, INK SCREENS, WATERMARK, BACKGROUND DESIGNS, HOLOGRAM AND OTHER SECURITY FEATURES NOT LISTED AND DO EXCEED DOCUMENT SECURITY INDUSTRY GUIDELINES.