



ELECTRONIC COPY

LG801628457 Report verification at igi.org

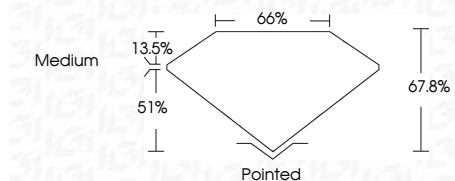


May 14, 2026 IGI Report Number LG801628457 Description LABORATORY GROWN DIAMOND Shape and Cutting Style CUT CORNERED RECTANGULAR MODIFIED BRILLIANT

Measurements 10.30 X 7.21 X 4.89 MM

GRADING RESULTS

Carat Weight 3.07 CARATS Color Grade E Clarity Grade VS 1



ADDITIONAL GRADING INFORMATION

Polish EXCELLENT Symmetry EXCELLENT Fluorescence NONE Inscription(s) LG801628457 Comments: This Laboratory Grown Diamond was created by Chemical Vapor Deposition (CVD) growth process. Type IIa



May 14, 2026 IGI Report No LG801628457 CUT CORNERED RECT. MODIFIED BRILLIANT 3.07 CARATS E VS 1 67.8% 66% Medium Pointed EXCELLENT EXCELLENT NONE LG801628457 Comments: This Laboratory Grown Diamond was created by Chemical Vapor Deposition (CVD) growth process. Type IIa

LABORATORY GROWN DIAMOND REPORT

May 14, 2026 IGI Report Number LG801628457 Description LABORATORY GROWN DIAMOND Shape and Cutting Style CUT CORNERED RECTANGULAR MODIFIED BRILLIANT Measurements 10.30 X 7.21 X 4.89 MM

GRADING RESULTS

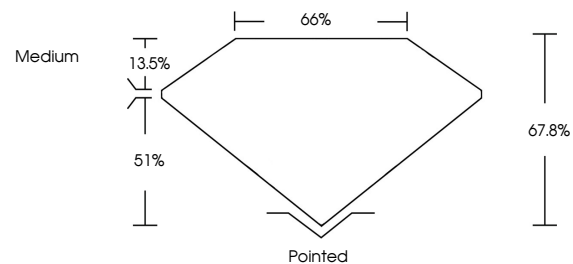
Carat Weight 3.07 CARATS Color Grade E Clarity Grade VS 1

ADDITIONAL GRADING INFORMATION

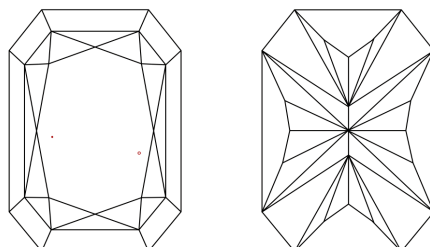
Polish EXCELLENT Symmetry EXCELLENT Fluorescence NONE Inscription(s) LG801628457

Comments: This Laboratory Grown Diamond was created by Chemical Vapor Deposition (CVD) growth process. Type IIa

PROPORTIONS

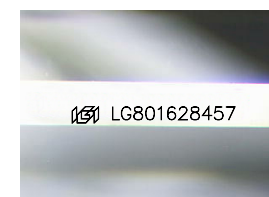


CLARITY CHARACTERISTICS



KEY TO SYMBOLS

Red symbols indicate internal characteristics. Green symbols indicate external characteristics.



Sample Image Used

COLOR

D E F G H I J Faint Very Light Light

CLARITY

FL IF VS 1-2 VS 1-2 SI 1-2 I 1-3 Flawless Internally Flawless Very Very Slightly Included Very Slightly Included Slightly Included Included