



**ELECTRONIC COPY**

LG801628336  
Report verification at igi.org



May 20, 2026  
IGI Report Number **LG801628336**  
Description **LABORATORY GROWN DIAMOND**  
Shape and Cutting Style **CUSHION MODIFIED BRILLIANT**  
Measurements **8.60 X 7.96 X 5.22 MM**  
**GRADING RESULTS**  
Carat Weight **3.06 CARATS**  
Color Grade **FANCY VIVID PINK**  
Clarity Grade **VVS 2**

**LABORATORY GROWN DIAMOND REPORT**

May 20, 2026  
IGI Report Number **LG801628336**  
Description **LABORATORY GROWN DIAMOND**  
Shape and Cutting Style **CUSHION MODIFIED BRILLIANT**  
Measurements **8.60 X 7.96 X 5.22 MM**

**GRADING RESULTS**

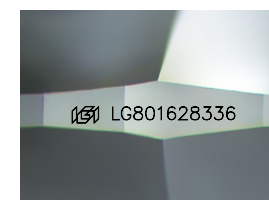
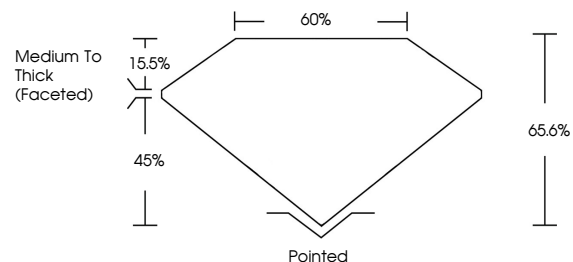
Carat Weight **3.06 CARATS**  
Color Grade **FANCY VIVID PINK**  
Clarity Grade **VVS 2**

**ADDITIONAL GRADING INFORMATION**

Polish **EXCELLENT**  
Symmetry **EXCELLENT**  
Fluorescence **STRONG**  
Inscription(s) **IGI LG801628336**

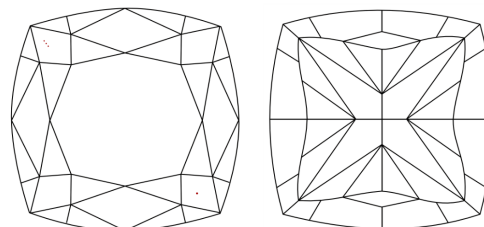
Comments: This Laboratory Grown Diamond was created by Chemical Vapor Deposition (CVD) growth process.  
Indications of post-growth treatment.

**PROPORTIONS**



Sample Image Used

**CLARITY CHARACTERISTICS**



**KEY TO SYMBOLS**

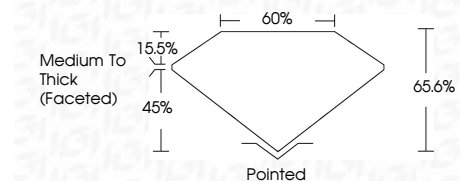
Red symbols indicate internal characteristics.  
Green symbols indicate external characteristics.

**COLOR**

D E F G H I J Faint Very Light Light

**CLARITY**

FL	IF	VVS <sup>1-2</sup>	VS <sup>1-2</sup>	SI <sup>1-2</sup>	I <sup>1-3</sup>
Flawless	Internally Flawless	Very Very Slightly Included	Very Slightly Included	Slightly Included	Included



**ADDITIONAL GRADING INFORMATION**

Polish **EXCELLENT**  
Symmetry **EXCELLENT**  
Fluorescence **STRONG**  
Inscription(s) **IGI LG801628336**  
Comments: This Laboratory Grown Diamond was created by Chemical Vapor Deposition (CVD) growth process.  
Indications of post-growth treatment.



May 20, 2026  
IGI Report No LG801628336  
**CUSHION MODIFIED BRILLIANT**  
8.60 X 7.96 X 5.22 MM  
3.06 CARATS  
FANCY VIVID PINK  
VVS 2  
65.6%  
45%  
Medium To Thick (Faceted)  
Pointed  
EXCELLENT  
EXCELLENT  
STRONG  
IGI LG801628336  
Comments: This Laboratory Grown Diamond was created by Chemical Vapor Deposition (CVD) growth process.  
Indications of post-growth treatment.