



ELECTRONIC COPY

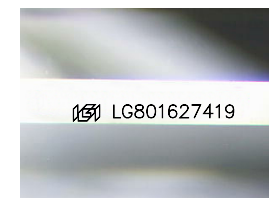
LG801627419
Report verification at igi.org



May 18, 2026
IGI Report Number **LG801627419**
Description **LABORATORY GROWN DIAMOND**

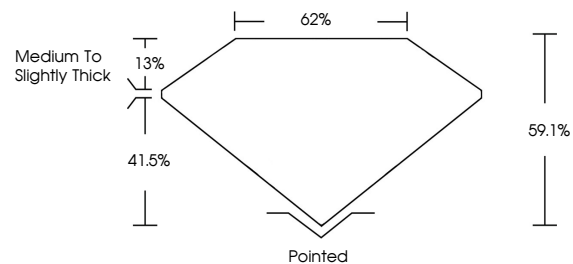
Shape and Cutting Style **HEXAGONAL STEP CUT**
Measurements **10.95 X 9.24 X 5.46 MM**

GRADING RESULTS
Carat Weight **4.00 CARATS**
Color Grade **FANCY INTENSE PINK**
Clarity Grade **VS 1**

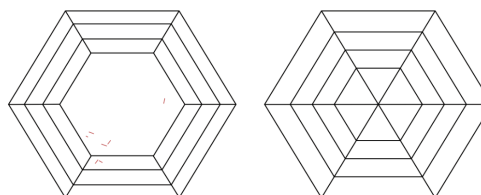


Sample Image Used

PROPORTIONS



CLARITY CHARACTERISTICS



KEY TO SYMBOLS

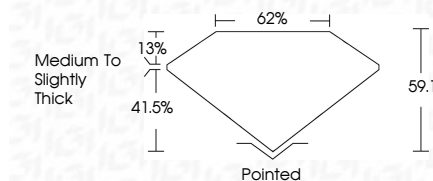
Red symbols indicate internal characteristics.
Green symbols indicate external characteristics.

COLOR

D E F G H I J Faint Very Light Light

CLARITY

FL	IF	VS ¹⁻²	VS ¹⁻²	SI ¹⁻²	I ¹⁻³
Flawless	Internally Flawless	Very Very Slightly Included	Very Slightly Included	Slightly Included	Included



ADDITIONAL GRADING INFORMATION

Polish **EXCELLENT**
Symmetry **EXCELLENT**
Fluorescence **SLIGHT**
Inscription(s) **IGI LG801627419**

Comments: This Laboratory Grown Diamond was created by Chemical Vapor Deposition (CVD) growth process. Indications of post-growth treatment.



May 18, 2026
IGI Report No LG801627419
HEXAGONAL STEP CUT
4.00 CARATS
FANCY INTENSE PINK
VS 1
10.95 X 9.24 X 5.46 MM
Color Grade
FANCY INTENSE PINK
Clarity Grade
VS 1
Depth
62%
Table
41.5%
Girdle
Medium to Slightly Thick
Culet
Pointed
Polish
EXCELLENT
Symmetry
EXCELLENT
Fluorescence
SLIGHT
Inscription(s)
IGI LG801627419
Comments: This Laboratory Grown Diamond was created by Chemical Vapor Deposition (CVD) growth process. Indications of post-growth treatment.