



ELECTRONIC COPY

LG801627392
Report verification at igi.org



May 20, 2026

IGI Report Number **LG801627392**

Description **LABORATORY GROWN DIAMOND**

Shape and Cutting Style **OLD EUROPEAN CUT**

Measurements **7.88 - 7.91 X 4.80 MM**

GRADING RESULTS

Carat Weight **2.00 CARATS**

Color Grade **U-V**

Clarity Grade **VVS 2**

May 20, 2026
IGI Report Number **LG801627392**
Description **LABORATORY GROWN DIAMOND**
Shape and Cutting Style **OLD EUROPEAN CUT**
Measurements **7.88 - 7.91 X 4.80 MM**

GRADING RESULTS

Carat Weight **2.00 CARATS**

Color Grade **U-V**

Clarity Grade **VVS 2**

ADDITIONAL GRADING INFORMATION

Polish **EXCELLENT**

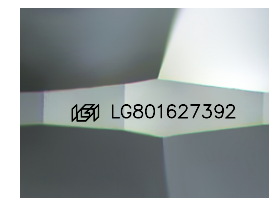
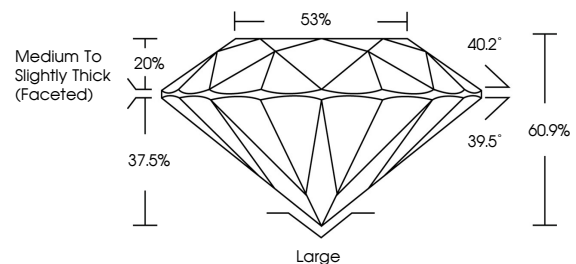
Symmetry **EXCELLENT**

Fluorescence **NONE**

Inscription(s) **IGI LG801627392**

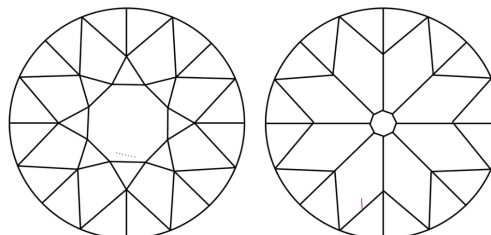
Comments: This Laboratory Grown Diamond was created by Chemical Vapor Deposition (CVD) growth process.
Type IIa

PROPORTIONS



Sample Image Used

CLARITY CHARACTERISTICS



KEY TO SYMBOLS

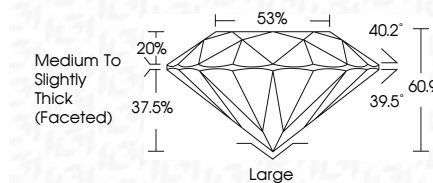
Red symbols indicate internal characteristics.
Green symbols indicate external characteristics.

COLOR

D E F G H I J Faint Very Light Light

CLARITY

FL	IF	VVS ¹⁻²	VS ¹⁻²	SI ¹⁻²	I ¹⁻³
Flawless	Internally Flawless	Very Very Slightly Included	Very Slightly Included	Slightly Included	Included



ADDITIONAL GRADING INFORMATION

Polish **EXCELLENT**

Symmetry **EXCELLENT**

Fluorescence **NONE**

Inscription(s) **IGI LG801627392**

Comments: This Laboratory Grown Diamond was created by Chemical Vapor Deposition (CVD) growth process.
Type IIa



IGI



May 20, 2026
IGI Report No LG801627392
OLD EUROPEAN CUT

7.88 - 7.91 X 4.80 MM

Carat Weight **2.00 CARATS**
Color Grade **U-V**
Clarity Grade **VVS 2**
Depth **60.9%**
Table **85%**
Girdle **Medium to Slightly Thick (Faceted)**

Culet **Large**
Polish **EXCELLENT**
Symmetry **EXCELLENT**
Fluorescence **NONE**
Inscription(s) **IGI LG801627392**

Comments: This Laboratory Grown Diamond was created by Chemical Vapor Deposition (CVD) growth process.
Type IIa