



ELECTRONIC COPY

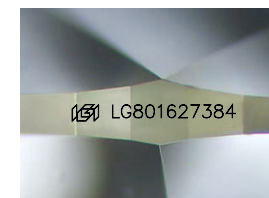
LG801627384
Report verification at igi.org



May 19, 2026
IGI Report Number **LG801627384**
Description **LABORATORY GROWN DIAMOND**

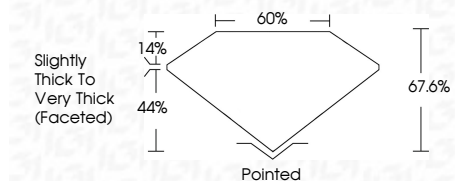
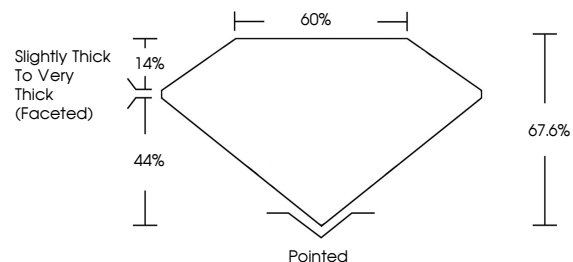
Shape and Cutting Style **PEAR MODIFIED BRILLIANT**
Measurements **8.44 X 5.25 X 3.55 MM**

GRADING RESULTS
Carat Weight **1.17 CARAT**
Color Grade **FANCY INTENSE YELLOW**
Clarity Grade **VS 1**

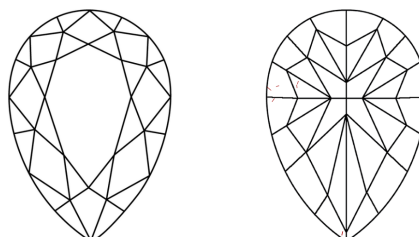


Sample Image Used

PROPORTIONS



CLARITY CHARACTERISTICS



KEY TO SYMBOLS

Red symbols indicate internal characteristics.
Green symbols indicate external characteristics.

COLOR

D E F G H I J Faint Very Light Light

CLARITY

FL	IF	VS ¹⁻²	VS ¹⁻²	SI ¹⁻²	I ¹⁻³
Flawless	Internally Flawless	Very Very Slightly Included	Very Slightly Included	Slightly Included	Included

ADDITIONAL GRADING INFORMATION

Polish **EXCELLENT**
Symmetry **VERY GOOD**
Fluorescence **NONE**
Inscription(s) **IGI LG801627384**

Comments: This Laboratory Grown Diamond was created by Chemical Vapor Deposition (CVD) growth process.



May 19, 2026
IGI Report No LG801627384
PEAR MODIFIED BRILLIANT
8.44 X 5.25 X 3.55 MM
1.17 CARAT
Color Grade **FANCY INTENSE YELLOW**
Clarity Grade **VS 1**
Depth **67.6%**
Table **60%**
Girdle **Slightly Thick To Very Thick (Faceted)**
Culet **Pointed**
Polish **EXCELLENT**
Symmetry **VERY GOOD**
Fluorescence **NONE**
Inscription(s) **IGI LG801627384**

Comments: This Laboratory Grown Diamond was created by Chemical Vapor Deposition (CVD) growth process.