



ELECTRONIC COPY

LG801626484
Report verification at igi.org



May 12, 2026

IGI Report Number **LG801626484**

Description **LABORATORY GROWN DIAMOND**

Shape and Cutting Style **PEAR BRILLIANT**

Measurements **16.63 X 9.99 X 6.39 MM**

GRADING RESULTS

Carat Weight **6.07 CARATS**

Color Grade **F**

Clarity Grade **VVS 2**

May 12, 2026
IGI Report Number **LG801626484**
Description **LABORATORY GROWN DIAMOND**
Shape and Cutting Style **PEAR BRILLIANT**
Measurements **16.63 X 9.99 X 6.39 MM**

GRADING RESULTS

Carat Weight **6.07 CARATS**

Color Grade **F**

Clarity Grade **VVS 2**

ADDITIONAL GRADING INFORMATION

Polish **EXCELLENT**

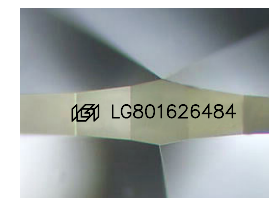
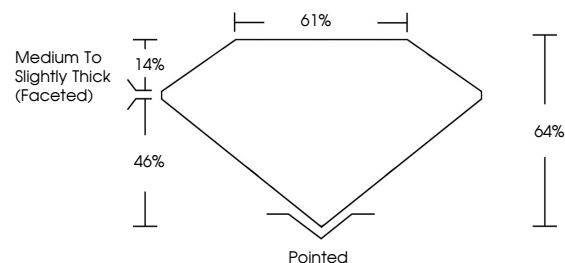
Symmetry **EXCELLENT**

Fluorescence **NONE**

Inscription(s) **IGI LG801626484**

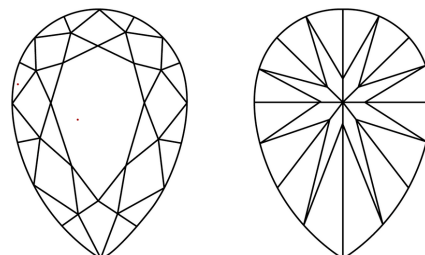
Comments: This Laboratory Grown Diamond was created by Chemical Vapor Deposition (CVD) growth process.
Type IIa

PROPORTIONS



Sample Image Used

CLARITY CHARACTERISTICS



KEY TO SYMBOLS

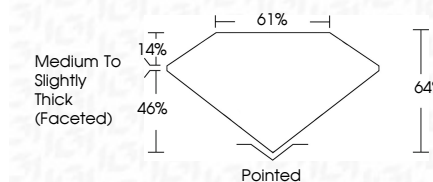
Red symbols indicate internal characteristics.
Green symbols indicate external characteristics.

COLOR

D E F G H I J Faint Very Light Light

CLARITY

FL	IF	VVS ¹⁻²	VS ¹⁻²	SI ¹⁻²	I ¹⁻³
Flawless	Internally Flawless	Very Very Slightly Included	Very Slightly Included	Slightly Included	Included



ADDITIONAL GRADING INFORMATION

Polish **EXCELLENT**

Symmetry **EXCELLENT**

Fluorescence **NONE**

Inscription(s) **IGI LG801626484**

Comments: This Laboratory Grown Diamond was created by Chemical Vapor Deposition (CVD) growth process.
Type IIa



IGI



May 12, 2026
IGI Report No LG801626484
PEAR BRILLIANT

6.07 CARATS
F

16.63 X 9.99 X 6.39 MM
VVS 2

64%
61%

Medium to Slightly Thick (Faceted)

Pointed
EXCELLENT

EXCELLENT

NONE

IGI LG801626484

Comments: This Laboratory Grown Diamond was created by Chemical Vapor Deposition (CVD) growth process.
Type IIa